

OAKBROOK REDEVELOPMENT PLAN FOR THE OAKBROOK REDEVELOPMENT PROJECT AREA Setting Forth Information Required by the Tax Increment Financing Act for Counties codified as Sections 31-7-10 to 31-7-130 of the Code of Laws of South Carolina 1976, as amended

The expansion of urbanized areas and the construction of new, more modern commercial areas in the Summerville and North Charleston areas of Dorchester County have created challenges for existing and established commercial areas like the Oakbrook area where declining infrastructure and lack of private and public investment have impacted its ability to compete with these newer commercial areas. As new development leapfrogs existing commercial areas, it is imperative that local government get involved to mitigate the factors that are causing these areas to become a drain on local services by becoming a threat to public safety, health, morals or welfare of County residents.

The Oakbrook Redevelopment Plan set forth herein (the “Redevelopment Plan”) and established pursuant to the Tax Increment Financing Act for Counties codified at Sections 31-7-10 to 31-7-130 of the Code of Laws of South Carolina 1976, as amended (the “Tax Increment Financing Act for Counties”) outlines a comprehensive, multi-agency plan to revitalize the Oakbrook area (as further described herein, the “Redevelopment Project Area”). The Redevelopment Plan will allow for projects that benefit both the Town of Summerville and Dorchester County. It outlines the types of public projects that are needed to reduce or eliminate those conditions which classify the Redevelopment Project Area as a “blighted area” as such term is defined in the Tax Increment Financing Act for Counties, deter the decrease of property values and alleviate the conditions that are a threat to private reinvestment.

The Oakbrook area is a priority investment area for both the Town of Summerville and Dorchester County. Funding public infrastructure projects in the Redevelopment Project Area through tax increment financing is needed to encourage private capital reinvestment in the Redevelopment Project Area and enhance the current tax base of the Redevelopment Project Area. These improvements will also make the Redevelopment Project Area more attractive for retail and restaurant activities, improve pedestrian and bike safety, reduce traffic, improve traffic safety, increase public access to the historical, recreational and environmental attractions of the Ashley River Corridor and improve public facilities in the Redevelopment Project Area.

BACKGROUND INFORMATION

The Oakbrook area is a geographic area located at the southeast edge of the Town of Summerville that includes properties located in the corporate limits of the Town of Summerville and in unincorporated Dorchester County. The center of the Redevelopment Project Area is located at the intersection of Old Trolley Road and Dorchester Road. According to the 2018 U.S. Census Bureau Population Estimates, there are approximately 33,041 people living within a three-mile radius of the center of the Redevelopment Project Area.

The Redevelopment Project Area abuts the Ashley River and functions as a gateway into the Town of Summerville. The Colonial Dorchester Historic State Site is adjacent to the Redevelopment Project Area and is home to the site of the pre-revolutionary, trading town of Dorchester. This historic site still boasts a handful of structures from the early town and is the site of ongoing archaeological digs.

The Oakbrook area is a great example of the suburbanization that occurred in the mid-1960s and 1970s. The Town of Summerville is one of the earliest bedroom communities of the City of Charleston, and Oakbrook is a sprawl area of the Town of Summerville. The Redevelopment Project Area currently includes several aged strip-retail centers that were once vibrant centers of commerce. The location of a new Walmart Supercenter and the surrounding strip shopping center in the City of North Charleston, just east of the Oakbrook area, may have contributed to the Redevelopment Project Area's decline.

The road network in the Redevelopment Project Area consists of 4 to 6 lane roads that have limited pedestrian and bicycle access. Dorchester Road, Old Trolley Road and Ladson Road are the main roads into and out of the Oakbrook area and were all widened in the last ten years. This auto-oriented widening improved the flow of traffic but significantly reduced pedestrian and bicycle access and made crossing these roads unsafe. The widening project also resulted in a reduction in intermobility for residents which contributed to the decrease in the community/neighborhood feel of the Redevelopment Project Area and may have contributed to the decline of the commercial and residential areas.

The Town of Summerville studied the Oakbrook area as part of its 2014 Vision Plan. The Vision Plan outlined several opportunities for improving the area, included a list of public projects to be completed in the area and provided several funding options for these activities, including the use of tax increment financing. The Vision Plan and its suggestions were utilized in the creation of this Redevelopment Plan.

Dorchester County also mentions the redevelopment of the Oakbrook area in its 2014 and 2015 Strategic Plan under Strategy 2- Economic Development as follows:

“The Town of Summerville recently adopted a “Vision Plan,” in which Oakbrook was one of three focus areas.... The Vision Plan does, however, reimagine public infrastructure in Oakbrook. Improvements to the public rights-of-way would be needed to realize the vision, including redesigned intersections, more stop lights, parallel parking on side streets, wider sidewalks and better illumination. The improvements are intrinsically necessary to support the development patterns depicted in the master plan for the area.”

BOUNDARIES OF REDEVELOPMENT PLAN

The Redevelopment Project Area is shown on the map attached as Exhibit A and consists of 2,034 parcels listed on Exhibit B and containing a mix of land uses, including residential, commercial, industrial and institutional.

CONDITIONS OF BLIGHT WITHIN THE REDEVELOPMENT PLAN

Section 31-7-30 of the Tax Increment Financing Act for Counties defines a "blighted area" as "any improved or vacant area within the boundaries of a redevelopment project area located within the territorial limits of a county where: if improved, industrial, commercial, and residential buildings or improvements, because of a combination of five or more of the following factors: age; dilapidation; obsolescence; deterioration; illegal use of individual structures; presence of structures below minimum code standards; excessive vacancies; overcrowding of structures and community facilities; presence of or potential environmental hazard; lack of ventilation, light, storm drainage, or sanitary facilities; inadequate utilities; inadequate transportation infrastructure; excessive land coverage; deleterious land use or layout; depreciation of physical maintenance; lack of community planning, are detrimental to the public safety, health, morals, or welfare".

County Council finds that the revitalization of the Redevelopment Project Area is threatened by the following current conditions of blight that are detrimental to the public safety, health, morals or welfare:

- **Age, Dilapidation, Obsolescence, and Deterioration of Structures and Excessive Vacancies** – The majority of structures in the Redevelopment Project Area were built in the 1970s or 1980s and are reaching the traditional 40-year useful end of life for big-box, retail structures. These structures are in need of significant reinvestment to bring them up to current building and planning standards and to make them competitive with new, more modern shopping centers. These centers do not meet current market and consumer needs or desires.

There has been some new investment in the Redevelopment Project Area in the form of a new Aldi, Lowes Food Store and Big Lots Store but the remaining portions of these strip malls suffer from disrepair, deterioration and excessive vacancies and threaten the success of these new businesses. Lack of use or misuse has allowed the structures to become unsafe and pose public safety issues.

- **Dilapidation, Obsolescence, and Deterioration of Site Improvements** - The existence of dilapidated, obsolete and deteriorated site improvements in the Redevelopment Project Area contributes to the need for public intervention and investment. Deficient site improvements include damaged parking lots, storm water systems, driveways, landscaping and signage. Expansive, aging parking lots with little to no stormwater drainage or landscaping exacerbate flooding issues and do not meet current regulations and standards. Inadequately sized and poorly maintained sidewalks also cause pedestrian and bicycle safety issues in the Redevelopment Project Area.

- **Illegal Use of Individual Structures** – Illegal use of several lots and structures has occurred in the Redevelopment Project Area. Two or more businesses in one shopping center have been utilized for illegal activities, such as a strip club and night club. Overnight parking of semitrucks and junk vehicles in shopping center parking lots and vacant lots are also illegal uses of the property which cause public safety issues and further erode the property values of the Redevelopment Project Area.
- **Inadequate Transportation Infrastructure** – The existing transportation infrastructure in the Redevelopment Project Area was designed to move vehicular traffic quickly through the intersections. This auto-oriented design has resulted in inadequately sized and poorly maintained sidewalks and bicycle lanes and a lack of connectivity between sidewalks, bicycle lanes, natural areas and trails in the Redevelopment Project Area. This has caused pedestrian and bicycle safety issues that make it dangerous for those individuals that do not own or cannot drive a vehicle to move around the Redevelopment Project Area and access the goods and services they need.
- **Lack of Storm Drainage** - Flooding has proven to be a costly problem in Dorchester County, particularly around Chandler/Eagle Creek located in the Redevelopment Project Area. Property owners in the area sustained flood damages in 2015, 2016, 2017, and again in 2018. Documented repetitive loss and severe repetitive loss properties qualified for either the Hazard Mitigation Grant Program (“HMGP”) or the Flood Mitigation Assistance (“FMA”) grant, or both.

Five residential properties in the Redevelopment Project Area consented to being considered for the HMGP grant though there was no guarantee Dorchester County would be selected. When the FMA grant opened, there was a new set of qualifications. Of the initial five properties, three were eligible to apply for the FMA grant for an additional chance to be selected – one, specifically, under the severe repetitive loss category. In addition to the three properties, four others qualified to apply for the FMA grant. The FMA grant was awarded in September 2018 in two parts: the severe repetitive loss property in the amount of \$229,850.25 and the remaining six repetitive loss properties in the amount of \$1,050,263.55.

In June 2019, the HMGP grant was awarded in the amount of \$636,000.25 to these properties. Dorchester County is working with the property owners involved to purchase the properties and demolish the structures. The properties will remain greenspace in perpetuity. Having the additional greenspace in the community will increase the pervious drainage area in the flood-prone community and should decrease the number of future National Flood Insurance Program (“NFIP”) claims. However, drainage issues continue to be a threat to property owners in the Redevelopment Project Area.

The commercial areas in the Redevelopment Project Area have also experienced flooding from Sawmill Branch, and the residential areas have experienced significant flooding from the Eagle-Chandler Creeks. During the October 2015 floods, Dorchester Road was impassable because of the floodwaters of Sawmill Branch and the adjacent shopping center was also flooded. The property on which the Charleston Battery Soccer Club operates repeatedly floods during heavy rains making it difficult to have consistent soccer practice and game opportunities for the citizens.

Lack of stormwater infrastructure in the aging parking lots in the Redevelopment Project Area may also be harmful to the Ashley River because there are no controls on the amount and quality of the runoff that flows into the river.

- **Lack of Community Planning** - The Redevelopment Project Area also suffers from a lack of community planning because the Redevelopment Project Area has property both in the Town of Summerville and in unincorporated Dorchester County. The Redevelopment Project Area lacks a cohesive land use plan and has experienced inconsistent code enforcement regulations and enforcement. Expansive parking lots with no stormwater drainage or landscaping, single-use retail buildings and strip centers do not represent best planning practices.

The absence and/or inefficient placement of outparcels presents traffic and parking issues. The Redevelopment Project Area has no design standards for the Town of Summerville or Dorchester County. There is a general lack of wayfinding signage and private signage is inadequate, in disrepair or does not meet the sign requirements of the Town of Summerville or Dorchester County.

- **Presence of Structures Below Minimum Code Standards** – The Redevelopment Project Area contains several structures that do not meet current zoning, land use, building or code enforcement standards. These buildings detract from the aesthetics of the Redevelopment Project Area and make it less desirable for private investment. They also affect the public safety of the Redevelopment Project Area and can cause health and safety issues when their uses are not compatible with the adjacent property uses.
- **Deleterious Land Use or Layout** - The Redevelopment Project Area contains several uses that are deleterious to the overall image and safety of the Redevelopment Project Area. This is a result of a lack of land use planning and lack of zoning and code enforcement coordination between the Town of Summerville and Dorchester County. Uses such as tattoo parlors, night clubs, bars and pawn shops have been allowed to operate next to big-box retail stores and restaurants.

REDEVELOPMENT PLAN OBJECTIVES

The objectives of the Redevelopment Plan are derived from the Town of Summerville's Vision Plan, which envisions the revitalization of Oakbrook as an Urban Village/Eco-Tourism Destination focused on redevelopment of under-utilized commercial properties into an active urban neighborhood center. To achieve these goals, specific objectives of the Redevelopment Plan include improvements to transportation and utilities infrastructure and streetscaping and improvements to or construction of public buildings and environmental, cultural, recreational and school facilities.

REDEVELOPMENT PROJECTS

There are numerous public investment opportunities in the Redevelopment Project Area. Below is a list of Redevelopment Projects that Dorchester County has determined should be undertaken to improve the public safety, health and welfare of the Redevelopment Project Area:

Improvements to Transportation Infrastructure including road improvements, stormwater infrastructure construction or improvements and construction of pedestrian and bicycle paths and trails

These projects include, but are not limited to:

- Dorchester Road Crossing

- Eagle-Chandler Bridge Creek Trail Phases 1 and 2

- Old Fort Sidewalk Along Parlor Drive

- Old Fort Sidewalk Phase IV

- Sawmill Branch Trail Extension

- Improvements to Current Public Transportation Park and Ride Areas

Improvements to Utilities Infrastructure including Water and Sewer improvements

These projects include, but are not limited to:

- Replacement of existing sewer line

Improvements to Streetscaping including the installation of street lighting, sidewalks, a vegetative buffer, landscaped medians, pedestrian crossings and utility improvements

These projects include, but are not limited to:

- The Vegetative Planting of the Medians on Dorchester Road

Improvements to or Construction of Public Buildings and Environmental, Cultural and Recreational Facilities

These projects include, but are not limited to:

Improvements to the Ladson Road EMS/Fire Station

Jessen Boat Landing Improvements

Town of Summerville's "Bend on the Ashley" Eco-tourism Center

Improvements to the Dorchester County property currently operated by the Charleston Battery Soccer Club

Branch of the Dorchester County Library in Oakbrook

Improvements to or Construction of school facilities on the Oakbrook Elementary and Middle School Site

Any architectural, design, engineering or land acquisition costs to accomplish the above Redevelopment Projects are included in the Redevelopment Project Costs.

DURATION OF PLAN

From the date of enactment of the Ordinance approving this Redevelopment Plan, the duration of the Oakbrook Redevelopment Plan will be 25 years. Long-term management of the Redevelopment Project Area will be done by Dorchester County staff and consultants employed by Dorchester County. All expenditures will be approved by the Dorchester County Council.

REDEVELOPMENT PROJECT COSTS AND FUNDING SOURCES

The current estimated Redevelopment Project Costs for the Redevelopment Plan, including those to be contributed from other funding sources, is \$35,000,000. This number is an estimate and will be decreased or increased as project opportunities are made available or as other funding sources and partnerships are found. Funding sources include incremental tax revenues as well as proceeds of borrowings by Dorchester County including several series of tax increment bonds, the first of which may be issued at a date no later than five years from the date of establishment of the Redevelopment Project Area. The total amount of tax increment indebtedness that will be incurred to implement this Redevelopment Plan is dependent upon such variables as interest rates, millage rates and the pace of private sector investment. It is anticipated that such indebtedness will be in a principal amount of approximately \$25,000,000. Other anticipated sources of funds for the Redevelopment Plan are: grants, Dorchester County and Town of Summerville funds, donations and private partnerships.

The most recent equalized assessed valuation of all property within the Redevelopment Project Area is \$19,183,990. The estimated equalized assessed valuation of all property within the Redevelopment Project Area after redevelopment is completed by the

estimated year of 2044 is \$27,834,921, which amount is expected to increase by 1.5% each year thereafter.

CONCLUSION

The Oakbrook Redevelopment Plan provides all taxing entities located in the Redevelopment Project Area, including the Town of Summerville, Dorchester County and School District No. 2 of Dorchester County, the opportunity to participate in the revitalization of the Oakbrook area and, in turn, benefit from the long-term growth in property tax revenues. The successful investment in and redevelopment of the public infrastructure in the Redevelopment Project Area will encourage private, capital investment for existing property owners and attract new retail, office and restaurant development. This plan will change the physical and economic landscape for both Dorchester County and the Town of Summerville and will encourage renewed citizen engagement for all those that live in or visit the Oakbrook area.

EXHIBIT A

MAP OF OAKBROOK REDEVELOPMENT PROJECT AREA

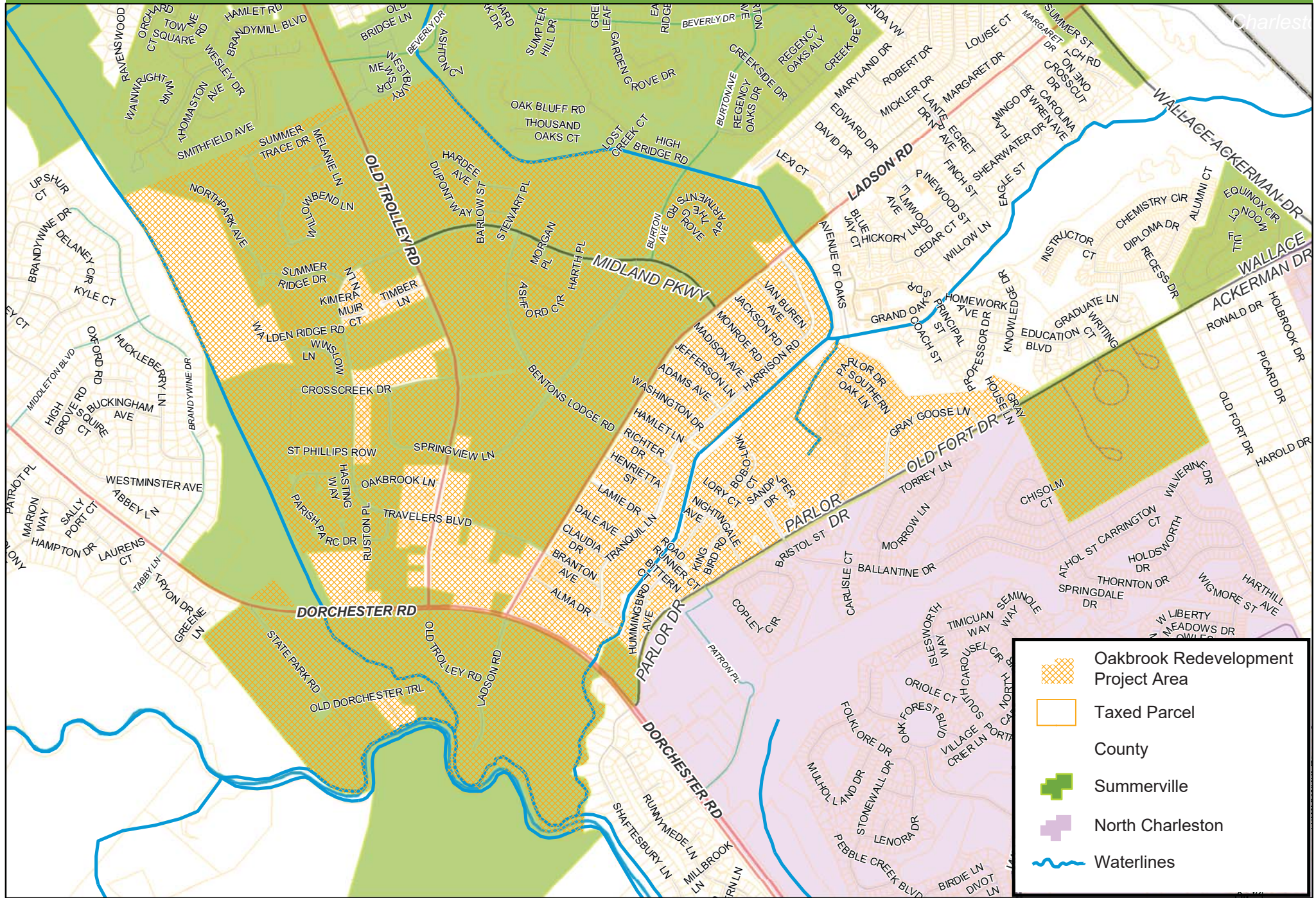


EXHIBIT B

Tax Parcels in the Oakbrook Redevelopment Project Area to be Included in the Oakbrook Redevelopment Plan

FID	Full TMS	Location
0	153-11-11-010.000	122 Summer Trace Dr
1	153-11-11-011.000	124 Summer Trace Dr
2	153-11-11-012.000	126 Summer Trace Dr
3	153-11-11-013.000	128 Summer Trace Dr
4	153-11-11-016.000	134 Summer Trace Dr
5	153-11-11-017.000	136 Summer Trace Dr
6	153-11-12-004.000	125 Summer Trace Dr
7	153-11-12-005.000	123 Summer Trace Dr
8	153-11-12-006.000	121 Summer Trace Dr
9	153-11-12-007.000	119 Summer Trace Dr
10	153-11-12-008.000	117 Summer Trace Dr
11	153-11-12-014.000	102 Melanie Ln
12	153-11-12-015.000	104 Melanie Ln
13	154-00-00-037.000	4234 Ladson Rd
14	154-00-00-044.000	4254 Ladson Rd
15	154-00-00-045.000	Ladson Rd
16	154-14-08-014.000	1027 Harrison Rd
17	161-00-00-070.000	Ladson Rd
18	161-03-08-020.000	100 St Phillips Row
19	161-03-08-021.000	104 St Phillips Row
20	161-03-08-024.000	116 St Phillips Row
21	161-03-08-025.000	120 St Phillips Row
22	161-03-08-026.000	124 St Phillips Row
23	161-03-08-029.000	136 St Phillips Row
24	161-03-08-038.000	137 St Phillips Row
25	161-03-08-039.000	133 St Phillips Row
26	161-03-08-040.000	129 St Phillips Row
27	161-03-09-004.000	336 Parish Parc Dr
28	161-04-11-002.000	103 Winslow Ln
29	161-12-01-001.000	100 Park Ln
30	162-01-06-002.000	1069 Harrison Rd
31	162-01-06-012.000	1049 Harrison Rd
32	162-01-09-005.000	105 Adams Ave
33	153-16-02-002.000	103 Kimeran Ln Unit D
34	153-16-02-007.000	103 Kimeran Ln Unit C
35	153-11-11-002.000	106 Summer Trace Dr
36	153-11-11-006.000	114 Summer Trace Dr
37	161-03-08-049.000	St Phillips Row
38	161-12-01-002.000	104 Park Ln

39	161-12-01-007.000	Park Ln
40	161-08-01-010.000	1920 Old Trolley Rd
41	161-04-07-020.000	Old Trolley Rd
42	153-11-11-009.000	120 Summer Trace Dr
43	153-11-11-014.000	130 Summer Trace Dr
44	153-11-12-002.000	129 Summer Trace Dr
45	153-11-12-003.000	127 Summer Trace Dr
46	153-11-12-011.000	111 Summer Trace Dr
47	153-11-12-017.000	102 Rosedale Ct
48	153-15-10-003.000	120 Willowbend Ln
49	153-11-11-003.000	108 Summer Trace Dr
50	153-11-11-004.000	110 Summer Trace Dr
51	153-15-11-027.000	112 Melanie Ln
52	153-15-10-032.000	176 Willowbend Ln
53	153-00-00-088.000	1540 Old Trolley Rd
54	153-00-00-081.000	1550 Old Trolley Rd
55	153-15-11-026.000	114 Melanie Ln
56	153-15-10-036.000	184 Willowbend Ln
57	153-15-11-018.000	171 Willowbend Ln
58	153-15-10-031.000	174 Willowbend Ln
59	153-15-10-038.000	191 Willowbend Ln
60	161-03-08-005.000	335 Parish Parc Dr
61	161-03-08-022.000	108 St Phillips Row
62	161-03-08-023.000	112 St Phillips Row
63	161-03-08-027.000	128 St Phillips Row
64	161-03-08-028.000	132 St Phillips Row
65	161-03-08-041.000	125 St Phillips Row
66	161-03-08-042.000	121 St Phillips Row
67	161-03-08-044.000	113 St Phillips Row
68	161-03-08-045.000	109 St Phillips Row
69	161-03-08-046.000	105 St Phillips Row
70	161-03-08-047.000	101 St Phillips Row
71	161-03-09-005.000	338 Parish Parc Dr
72	161-03-09-006.000	350 Parish Parc Dr
73	161-03-09-007.000	100 Brighton Ln
74	161-03-09-008.000	102 Brighton Ln
75	161-08-01-031.000	303 Parish Parc Dr
76	161-08-01-032.000	305 Parish Parc Dr
77	161-08-05-004.000	104 Parish Parc Dr
78	161-08-05-005.000	112 Parish Parc Dr
79	161-08-05-006.000	100 Ruston Pl
80	161-08-05-016.000	101 Ruston Pl
81	161-08-05-017.000	100 Nottingham Ct
82	161-03-08-048.000	St Phillips Row
83	153-15-11-011.000	143 Willowbend Ln

84	153-15-11-012.000	145 Willowbend Ln
85	153-15-10-015.000	144 Willowbend Ln
86	153-15-11-014.000	163 Willowbend Ln
87	153-15-11-009.000	133 Willowbend Ln
88	153-15-11-008.000	131 Willowbend Ln
89	153-15-10-009.000	132 Willowbend Ln
90	153-15-10-010.000	134 Willowbend Ln
91	153-15-10-013.000	140 Willowbend Ln
92	153-15-10-016.000	146 Willowbend Ln
93	153-15-10-017.000	148 Willowbend Ln
94	153-15-10-007.000	128 Willowbend Ln
95	162-01-06-003.000	1067 Harrison Rd
96	162-01-06-004.000	1065 Harrison Rd
97	162-01-06-005.000	1063 Harrison Rd
98	162-01-06-006.000	1061 Harrison Rd
99	162-01-06-007.000	1059 Harrison Rd
100	162-01-06-008.000	1057 Harrison Rd
101	162-01-06-014.000	1043 Harrison Rd
102	162-01-07-001.000	1041 Harrison Rd
103	162-01-07-002.000	1039 Harrison Rd
104	162-01-07-003.000	1037 Harrison Rd
105	162-01-07-004.000	1035 Harrison Rd
106	162-01-07-005.000	1033 Harrison Rd
107	162-01-09-001.000	100 Jefferson Ln
108	162-01-09-003.000	101 Adams Ave
109	162-01-09-004.000	103 Adams Ave
110	162-01-09-006.000	107 Adams Ave
111	162-01-09-007.000	109 Adams Ave
112	162-01-09-008.000	111 Adams Ave
113	162-01-09-009.000	113 Adams Ave
114	162-01-09-010.000	115 Adams Ave
115	162-01-09-011.000	114 Jefferson Ln
116	162-01-09-012.000	112 Jefferson Ln
117	162-01-09-013.000	110 Jefferson Ln
118	162-01-09-014.000	108 Jefferson Ln
119	162-01-09-015.000	106 Jefferson Ln
120	162-01-09-016.000	104 Jefferson Ln
121	162-01-09-017.000	102 Jefferson Ln
122	162-01-10-005.000	105 Jefferson Ln
123	162-01-10-006.000	107 Jefferson Ln
124	162-01-10-007.000	109 Jefferson Ln
125	162-01-10-008.000	111 Jefferson Ln
126	162-01-10-009.000	113 Jefferson Ln
127	162-01-10-010.000	115 Jefferson Ln
128	162-01-10-011.000	114 Madison Ave

129	162-01-10-015.000	106 Madison Ave
130	162-05-02-013.000	122 Tranquil Ln
131	162-05-02-012.000	120 Tranquil Ln
132	162-01-09-002.000	4327 Ladson Rd
133	153-16-02-010.000	105 Kimeran Ln Unit C
134	153-15-11-024.000	183 Willowbend Ln
135	153-15-10-011.000	136 Willowbend Ln
136	153-16-02-011.000	105 Kimeran Ln Unit B
137	153-15-10-033.000	178 Willowbend Ln
138	162-01-07-006.000	1031 Harrison Rd
139	162-01-10-001.000	100 Madison Ave
140	153-15-10-034.000	180 Willowbend Ln
141	153-16-02-001.000	101 Kimeran Ln Unit D
142	153-15-10-030.000	172 Willowbend Ln
143	153-15-10-035.000	182 Willowbend Ln
144	153-15-10-041.000	127 Melanie Ln
145	153-15-11-010.000	135 Willowbend Ln
146	153-15-10-019.000	152 Willowbend Ln
147	153-16-02-006.000	101 Kimeran Ln Unit A
148	153-16-02-012.000	105 Kimeran Ln Unit A
149	153-15-06-001.000	113 Winslow Ln
150	153-15-11-025.000	116 Melanie Ln
151	153-15-11-019.000	173 Willowbend Ln
152	153-15-10-014.000	142 Willowbend Ln
153	153-15-10-018.000	150 Willowbend Ln
154	153-16-02-008.000	103 Kimeran Ln Unit B
155	153-15-10-039.000	189 Willowbend Ln
156	153-15-10-040.000	129 Melanie Ln
157	153-15-11-017.000	169 Willowbend Ln
158	153-15-11-013.000	147 Willowbend Ln
159	153-15-10-012.000	138 Willowbend Ln
160	154-00-00-031.000	188 Midland Pkwy Unit 335
161	154-13-03-019.000	102 Van Buren Ave
162	154-13-04-012.000	Harrison Rd
163	162-01-10-016.000	104 Madison Ave
164	162-01-10-017.000	102 Madison Ave
165	154-14-08-015.000	1029 Harrison Rd
166	162-01-10-002.000	Ladson Rd
167	162-01-10-004.000	103 Jefferson Ln
168	161-03-08-003.000	329 Parish Parc Dr
169	161-04-01-008.002	Old Trolley Rd
170	161-04-01-008.001	Old Trolley Rd
171	161-04-02-056.000	587 Travelers Blvd
172	161-04-02-035.000	545 Travelers Blvd
173	161-04-02-017.000	509 Travelers Blvd

174	161-04-02-018.000	511 Travelers Blvd
175	161-04-02-030.000	535 Travelers Blvd
176	161-04-02-031.000	537 Travelers Blvd
177	161-04-02-032.000	539 Travelers Blvd
178	161-04-02-033.000	541 Travelers Blvd
179	161-04-02-027.000	Travelers Blvd
180	161-04-02-028.000	531 Travelers Blvd
181	161-04-02-029.000	533 Travelers Blvd
182	161-04-02-044.000	563 Travelers Blvd
183	161-04-02-043.000	561 Travelers Blvd
184	161-04-02-042.000	559 Travelers Blvd
185	161-04-02-041.000	557 Travelers Blvd
186	161-04-02-047.000	569 Travelers Blvd
187	161-04-02-046.000	567 Travelers Blvd
188	161-04-02-083.000	321 Springview Ln
189	161-04-02-084.000	319 Springview Ln
190	161-04-02-086.000	315 Springview Ln
191	161-08-01-005.015	Travelers Blvd
192	161-08-01-005.016	Travelers Blvd
193	161-08-01-005.013	Travelers Blvd
194	161-08-01-005.014	Travelers Blvd
195	161-08-01-005.011	Travelers Blvd
196	161-08-01-005.012	Travelers Blvd
197	161-08-01-005.010	Travelers Blvd
198	161-08-01-005.009	Travelers Blvd
199	161-08-01-005.023	Travelers Blvd
200	161-08-01-005.024	810 Travelers Blvd
201	161-08-01-005.021	Travelers Blvd
202	161-08-01-005.022	Travelers Blvd
203	161-08-01-005.019	Travelers Blvd
204	161-08-01-005.002	Travelers Blvd
205	162-05-01-010.000	113 Alma Dr
206	162-05-01-001.002	Ladson Rd
207	162-05-01-001.003	4651 Ladson Rd
208	162-05-01-001.004	Ladson Rd
209	162-05-01-001.005	Ladson Rd
210	162-05-01-001.006	Ladson Rd
211	162-05-01-002.001	4651 Ladson Rd
212	162-05-01-002.002	Ladson Rd
213	162-05-01-002.004	4651 Ladson Rd
214	162-05-01-002.005	4631 Ladson Rd
215	162-05-01-002.006	4651 Ladson Rd
216	162-05-01-002.008	4631 Ladson Rd
217	162-05-01-002.007	4631 Ladson Rd
218	162-05-01-003.012	Ladson Rd

219	162-05-01-003.011	Ladson Rd
220	162-05-01-003.010	Ladson Rd
221	162-05-01-003.009	Ladson Rd
222	162-05-01-003.008	Ladson Rd
223	162-05-01-003.007	Ladson Rd
224	162-05-01-003.006	4651 Ladson Rd
225	162-05-01-003.005	Ladson Rd
226	162-05-01-005.005	Ladson Rd
227	162-05-01-005.004	Ladson Rd
228	162-05-01-005.003	Ladson Rd
229	162-05-01-005.001	Ladson Rd
230	162-05-01-005.002	Ladson Rd
231	161-08-04-002.000	9999 Dorchester Rd
232	153-17-03-020.000	188 Midland Pkwy Unit 312
233	153-17-03-021.000	188 Midland Pkwy Unit 321
234	153-17-01-055.000	188 Midland Pkwy Unit 315
235	153-17-01-054.000	188 Midland Pkwy Unit 314
236	153-17-01-051.000	188 Midland Pkwy Unit 303
237	153-17-01-050.000	188 Midland Pkwy Unit 302
238	153-17-02-032.000	188 Midland Pkwy Unit 420
239	153-17-02-031.000	188 Midland Pkwy Unit 419
240	153-17-02-026.000	188 Midland Pkwy Unit 406
241	153-17-01-097.000	188 Midland Pkwy Unit 503
242	153-17-01-096.000	188 Midland Pkwy Unit 502
243	153-17-01-015.000	188 Midland Pkwy Unit 107
244	153-16-04-019.000	115 Ashford Cir
245	153-16-04-022.000	121 Ashford Cir
246	153-16-04-020.000	117 Ashford Cir
247	153-16-04-021.000	119 Ashford Cir
248	153-16-04-006.000	100 Harth Pl
249	153-17-03-008.000	188 Midland Pkwy Unit 124
250	153-17-03-005.000	188 Midland Pkwy Unit 121
251	153-17-03-004.000	188 Midland Pkwy Unit 112
252	153-17-01-003.000	188 Midland Pkwy Unit 103
253	153-17-03-001.000	188 Midland Pkwy Unit 109
254	153-17-03-013.000	188 Midland Pkwy Unit 221
255	153-17-03-012.000	188 Midland Pkwy Unit 212
256	153-17-01-010.000	188 Midland Pkwy Unit 102
257	153-17-01-022.000	188 Midland Pkwy Unit 115
258	153-17-01-018.000	188 Midland Pkwy Unit 111
259	153-17-01-123.000	188 Midland Pkwy Unit 607
260	153-17-01-131.000	188 Midland Pkwy Unit 615
261	153-17-01-122.000	188 Midland Pkwy Unit 606
262	153-17-01-130.000	188 Midland Pkwy Unit 614
263	153-17-01-127.000	188 Midland Pkwy Unit 611

264	153-17-01-126.000	188 Midland Pkwy Unit 610
265	153-17-01-157.000	188 Midland Pkwy Unit 707
266	153-17-01-162.000	188 Midland Pkwy Unit 713
267	153-17-01-161.000	188 Midland Pkwy Unit 712
268	153-17-01-113.000	188 Midland Pkwy Unit 514
269	153-17-01-114.000	188 Midland Pkwy Unit 515
270	153-17-01-115.000	188 Midland Pkwy Unit 516
271	153-17-01-140.000	188 Midland Pkwy Unit 627
272	153-17-01-139.000	188 Midland Pkwy Unit 626
273	153-17-01-136.000	188 Midland Pkwy Unit 623
274	153-17-01-138.000	188 Midland Pkwy Unit 625
275	153-16-09-015.000	106 Dupont Way
276	153-17-01-146.000	188 Midland Pkwy Unit 633
277	153-17-01-135.000	188 Midland Pkwy Unit 622
278	153-17-01-107.000	188 Midland Pkwy Unit 505
279	153-17-01-079.000	188 Midland Pkwy Unit 401
280	153-17-01-080.000	188 Midland Pkwy Unit 402
281	153-17-01-081.000	188 Midland Pkwy Unit 403
282	153-17-01-086.000	188 Midland Pkwy Unit 408
283	153-17-01-087.000	188 Midland Pkwy Unit 410
284	153-17-01-088.000	188 Midland Pkwy Unit 411
285	153-17-01-093.000	188 Midland Pkwy Unit 416
286	153-17-01-062.000	188 Midland Pkwy Unit 306
287	153-17-01-066.000	188 Midland Pkwy Unit 313
288	153-17-01-070.000	188 Midland Pkwy Unit 317
289	153-17-01-142.000	188 Midland Pkwy Unit 629
290	153-17-01-134.000	188 Midland Pkwy Unit 621
291	161-04-02-004.000	Oakbrook Ln
292	153-11-11-007.000	116 Summer Trace Dr
293	161-03-09-003.000	334 Parish Parc Dr
294	161-03-09-009.000	104 Brighton Ln
295	161-04-08-002.000	107 Brighton Ln
296	153-11-11-015.000	132 Summer Trace Dr
297	153-11-12-028.000	103 Willowbend Ln
298	153-11-12-029.000	105 Willowbend Ln
299	153-11-12-025.000	103 Rosedale Ct
300	153-11-11-024.000	102 Willowbend Ln
301	161-04-02-003.000	244 Oakbrook Ln
302	161-03-08-016.000	357 Parish Parc Dr
303	161-03-08-017.000	359 Parish Parc Dr
304	161-03-09-002.000	328 Parish Parc Dr
305	161-03-09-010.000	106 Brighton Ln
306	161-04-08-001.000	109 Brighton Ln
307	161-04-08-007.000	102 Hasting Way
308	161-04-08-009.000	106 Hasting Way

309	161-04-08-013.000	107 Hasting Way
310	161-04-08-015.000	103 Hasting Way
311	161-04-09-005.000	411 Parish Parc Dr
312	161-08-05-012.000	109 Ruston Pl
313	161-08-05-015.000	103 Ruston Pl
314	161-08-05-018.000	102 Nottingham Ct
315	161-08-05-025.000	109 Nottingham Ct
316	161-08-05-027.000	105 Nottingham Ct
317	161-08-05-029.000	101 Nottingham Ct
318	161-08-05-033.000	318 Parish Parc Dr
319	161-04-10-002.000	102 Winslow Ln
320	162-01-06-013.000	1047 Harrison Rd
321	154-13-06-003.000	299 Midland Pkwy
322	162-01-06-011.000	1051 Harrison Rd
323	153-16-09-021.000	109 Halcyon Rd
324	153-16-09-022.000	106 Barlow Dr
325	153-16-09-023.000	104 Barlow Dr
326	153-12-02-013.000	228 Dupont Way
327	153-16-12-001.000	205 Hardee Ave
328	153-16-12-006.000	111 Barlow Dr
329	153-16-12-009.000	105 Barlow Dr
330	153-16-12-016.000	212 Dupont Way
331	153-12-01-036.000	303 Dupont Way
332	153-12-01-037.000	301 Dupont Way
333	153-12-01-041.000	241 Dupont Way
334	153-16-08-011.000	200 Hardee Ave
335	153-12-01-004.000	208 Hardee Ave
336	153-12-01-005.000	210 Hardee Ave
337	153-12-01-006.000	212 Hardee Ave
338	153-12-01-007.000	214 Hardee Ave
339	153-12-01-013.000	226 Hardee Ave
340	153-16-11-002.000	203 Dupont Way
341	153-16-11-003.000	205 Dupont Way
342	153-16-07-014.000	120 Stewart Pl
343	153-16-07-015.000	122 Stewart Pl
344	161-07-08-005.000	317 Parish Parc Dr
345	161-07-08-006.000	319 Parish Parc Dr
346	161-03-08-002.000	327 Parish Parc Dr
347	161-07-08-008.000	323 Parish Parc Dr
348	161-04-02-051.000	577 Travelers Blvd
349	161-04-02-057.000	589 Travelers Blvd
350	161-04-02-058.000	591 Travelers Blvd
351	161-04-02-060.000	595 Travelers Blvd
352	161-04-02-013.000	501 Travelers Blvd
353	161-08-01-005.006	810 Travelers Blvd

354	161-08-01-005.004	Travelers Blvd
355	162-05-01-012.000	114 Branton Ave
356	162-05-01-001.007	Ladson Rd
357	162-05-01-001.009	Ladson Rd
358	162-05-01-005.008	Ladson Rd
359	162-05-01-005.006	Ladson Rd
360	162-05-04-006.000	107 Claudia Dr
361	162-05-04-011.000	108 Dale Ave
362	162-05-04-013.000	104 Dale Ave
363	162-05-06-002.000	103 Dale Ave
364	162-01-01-005.000	109 Lamie Dr
365	153-17-01-008.000	188 Midland Pkwy Unit 116
366	153-17-02-005.000	188 Midland Pkwy Unit 117
367	153-17-02-004.000	188 Midland Pkwy Unit 108
368	153-17-01-001.000	188 Midland Pkwy Unit 101
369	153-17-01-002.000	188 Midland Pkwy Unit 102
370	153-17-01-028.000	188 Midland Pkwy Unit 204
371	153-17-01-026.000	188 Midland Pkwy Unit 202
372	153-17-02-015.000	188 Midland Pkwy Unit 219
373	153-17-02-010.000	188 Midland Pkwy Unit 206
374	153-17-03-010.000	188 Midland Pkwy Unit 210
375	153-17-01-049.000	188 Midland Pkwy Unit 301
376	153-17-01-056.000	188 Midland Pkwy Unit 316
377	153-17-02-018.000	188 Midland Pkwy Unit 306
378	153-17-02-019.000	188 Midland Pkwy Unit 307
379	153-17-02-022.000	188 Midland Pkwy Unit 318
380	153-17-02-023.000	188 Midland Pkwy Unit 319
381	153-17-03-023.000	188 Midland Pkwy Unit 323
382	153-17-03-032.000	188 Midland Pkwy Unit 424
383	153-17-03-031.000	188 Midland Pkwy Unit 423
384	153-17-02-029.000	188 Midland Pkwy Unit 417
385	153-17-01-076.000	188 Midland Pkwy Unit 414
386	153-17-03-030.000	188 Midland Pkwy Unit 422
387	153-17-02-028.000	188 Midland Pkwy Unit 408
388	153-17-01-073.000	188 Midland Pkwy Unit 403
389	153-17-01-071.000	188 Midland Pkwy Unit 401
390	153-17-03-025.000	188 Midland Pkwy Unit 409
391	153-17-01-102.000	188 Midland Pkwy Unit 516
392	153-17-01-101.000	188 Midland Pkwy Unit 515
393	153-17-03-039.000	188 Midland Pkwy Unit 523
394	153-17-02-037.000	188 Midland Pkwy Unit 517
395	153-17-01-100.000	188 Midland Pkwy Unit 514
396	153-17-01-098.000	188 Midland Pkwy Unit 504
397	153-17-02-035.000	188 Midland Pkwy Unit 507
398	153-17-02-033.000	188 Midland Pkwy Unit 505

399	153-17-01-016.000	188 Midland Pkwy Unit 108
400	153-17-01-024.000	188 Midland Pkwy Unit 117
401	153-17-01-036.000	188 Midland Pkwy Unit 204
402	153-17-01-042.000	188 Midland Pkwy Unit 211
403	153-17-01-124.000	188 Midland Pkwy Unit 608
404	153-17-01-129.000	188 Midland Pkwy Unit 613
405	153-17-01-119.000	188 Midland Pkwy Unit 603
406	153-17-01-128.000	188 Midland Pkwy Unit 612
407	153-17-01-125.000	188 Midland Pkwy Unit 609
408	153-17-01-154.000	188 Midland Pkwy Unit 704
409	153-17-01-152.000	188 Midland Pkwy Unit 702
410	153-17-01-160.000	188 Midland Pkwy Unit 711
411	153-17-01-149.000	188 Midland Pkwy Unit 636
412	153-17-01-148.000	188 Midland Pkwy Unit 635
413	161-04-08-005.000	101 Brighton Ln
414	161-07-08-007.000	321 Parish Parc Dr
415	161-08-05-013.000	107 Ruston Pl
416	161-08-05-019.000	104 Nottingham Ct
417	161-08-05-032.000	316 Parish Parc Dr
418	161-08-05-034.000	320 Parish Parc Dr
419	161-08-05-035.000	322 Parish Parc Dr
420	153-15-10-025.000	164 Willowbend Ln
421	153-15-11-015.000	165 Willowbend Ln
422	153-15-11-007.000	129 Willowbend Ln
423	162-01-06-009.000	1055 Harrison Rd
424	162-01-06-010.000	1053 Harrison Rd
425	153-15-10-028.000	168 Willowbend Ln
426	153-15-11-023.000	181 Willowbend Ln
427	161-04-10-005.000	108 Winslow Ln
428	154-13-06-004.000	188 Midland Pkwy
429	153-16-09-004.000	109 Hardee Ave
430	153-16-09-005.000	107 Hardee Ave
431	153-16-09-008.000	111 Stewart Pl
432	153-16-09-009.000	109 Stewart Pl
433	153-16-09-014.000	104 Dupont Way
434	153-16-09-011.000	105 Stewart Pl
435	153-16-09-016.000	108 Dupont Way
436	153-16-09-017.000	Hardee Ave
437	153-12-02-014.000	226 Dupont Way
438	153-12-02-016.000	222 Dupont Way
439	153-16-12-018.000	216 Dupont Way
440	153-16-12-019.000	218 Dupont Way
441	153-12-01-017.000	306 Dupont Way
442	153-12-01-019.000	310 Dupont Way
443	153-12-01-035.000	305 Dupont Way

444	153-12-01-003.000	206 Hardee Ave
445	153-12-01-042.000	239 Dupont Way
446	153-16-11-005.000	209 Dupont Way
447	153-16-11-012.000	223 Dupont Way
448	153-16-07-001.000	Stewart Pl
449	161-07-08-001.000	309 Parish Parc Dr
450	161-07-08-003.000	313 Parish Parc Dr
451	161-07-08-004.000	315 Parish Parc Dr
452	161-04-02-025.000	525 Travelers Blvd
453	161-04-02-050.000	575 Travelers Blvd
454	161-04-02-048.000	571 Travelers Blvd
455	161-04-02-085.000	317 Springview Ln
456	161-08-01-005.018	810 Travelers Blvd
457	161-08-01-005.007	Travelers Blvd Unit D-1
458	161-08-01-005.005	810 Travelers Blvd
459	161-08-01-005.003	Travelers Blvd
460	162-05-01-001.001	4651 Ladson Rd
461	162-05-01-001.012	Ladson Rd
462	162-05-01-002.003	Ladson Rd
463	162-05-01-003.003	Ladson Rd
464	162-05-01-003.002	4651 Ladson Rd
465	162-05-01-005.007	Ladson Rd
466	162-05-06-013.000	102 Lamie Dr
467	162-01-01-006.000	111 Lamie Dr
468	162-01-01-008.000	115 Lamie Dr
469	153-17-01-006.000	188 Midland Pkwy Unit 114
470	153-17-02-003.000	188 Midland Pkwy Unit 107
471	153-17-01-032.000	188 Midland Pkwy Unit 216
472	153-17-01-031.000	188 Midland Pkwy Unit 215
473	153-17-01-027.000	188 Midland Pkwy Unit 203
474	153-17-02-012.000	188 Midland Pkwy Unit 208
475	153-17-03-009.000	188 Midland Pkwy Unit 209
476	153-17-03-015.000	188 Midland Pkwy Unit 223
477	153-17-02-011.000	188 Midland Pkwy Unit 207
478	153-17-01-053.000	188 Midland Pkwy Unit 313
479	153-17-02-020.000	188 Midland Pkwy Unit 308
480	153-17-02-021.000	188 Midland Pkwy Unit 317
481	153-17-03-018.000	188 Midland Pkwy Unit 310
482	153-17-01-075.000	188 Midland Pkwy Unit 413
483	153-17-01-074.000	188 Midland Pkwy Unit 404
484	153-17-03-026.000	188 Midland Pkwy Unit 410
485	153-17-02-040.000	188 Midland Pkwy Unit 520
486	153-17-03-040.000	188 Midland Pkwy Unit 524
487	153-17-02-039.000	188 Midland Pkwy Unit 519
488	153-17-01-099.000	188 Midland Pkwy Unit 513

489	153-17-02-038.000	188 Midland Pkwy Unit 518
490	153-17-01-095.000	188 Midland Pkwy Unit 501
491	153-17-03-033.000	188 Midland Pkwy Unit 509
492	153-17-02-034.000	188 Midland Pkwy Unit 506
493	153-17-01-011.000	188 Midland Pkwy Unit 103
494	153-17-01-009.000	188 Midland Pkwy Unit 101
495	153-17-01-021.000	188 Midland Pkwy Unit 114
496	153-17-01-020.000	188 Midland Pkwy Unit 113
497	153-17-01-033.000	188 Midland Pkwy Unit 201
498	153-17-01-034.000	188 Midland Pkwy Unit 202
499	153-17-01-038.000	188 Midland Pkwy Unit 206
500	153-17-01-040.000	188 Midland Pkwy Unit 208
501	153-17-01-044.000	188 Midland Pkwy Unit 213
502	153-17-01-048.000	188 Midland Pkwy Unit 217
503	153-17-01-045.000	188 Midland Pkwy Unit 214
504	153-17-01-132.000	188 Midland Pkwy Unit 616
505	153-17-01-121.000	188 Midland Pkwy Unit 605
506	153-17-01-117.000	188 Midland Pkwy Unit 601
507	153-17-01-158.000	188 Midland Pkwy Unit 708
508	153-17-01-156.000	188 Midland Pkwy Unit 706
509	153-17-01-155.000	188 Midland Pkwy Unit 705
510	153-17-01-164.000	188 Midland Pkwy Unit 715
511	153-17-01-166.000	188 Midland Pkwy Unit 717
512	153-17-01-150.000	188 Midland Pkwy Unit 637
513	153-17-01-147.000	188 Midland Pkwy Unit 634
514	153-17-01-106.000	188 Midland Pkwy Unit 504
515	153-17-01-110.000	188 Midland Pkwy Unit 511
516	153-17-01-111.000	188 Midland Pkwy Unit 512
517	153-17-01-083.000	188 Midland Pkwy Unit 405
518	153-17-01-085.000	188 Midland Pkwy Unit 407
519	153-17-01-089.000	188 Midland Pkwy Unit 412
520	153-17-01-092.000	188 Midland Pkwy Unit 415
521	153-17-01-060.000	188 Midland Pkwy Unit 304
522	153-17-01-057.000	188 Midland Pkwy Unit 301
523	153-17-01-067.000	188 Midland Pkwy Unit 314
524	153-17-01-069.000	188 Midland Pkwy Unit 316
525	153-17-01-143.000	188 Midland Pkwy Unit 630
526	161-04-02-006.000	500 Oakbrook Ln
527	161-04-02-002.000	Travelers Blvd
528	153-15-11-028.000	110 Melanie Ln
529	161-03-09-012.000	110 Brighton Ln
530	161-04-08-004.000	103 Brighton Ln
531	161-04-08-016.000	101 Hasting Way
532	161-04-09-002.000	405 Parish Parc Dr
533	161-07-08-002.000	311 Parish Parc Dr

534	161-08-05-014.000	105 Ruston Pl
535	161-08-05-021.000	108 Nottingham Ct
536	161-08-05-024.000	111 Nottingham Ct
537	161-08-05-028.000	103 Nottingham Ct
538	153-15-10-024.000	162 Willowbend Ln
539	153-15-10-023.000	160 Willowbend Ln
540	153-15-11-016.000	167 Willowbend Ln
541	153-15-10-029.000	170 Willowbend Ln
542	153-15-10-020.000	154 Willowbend Ln
543	153-16-04-005.000	101 Morgan Pl
544	154-13-06-002.000	105 Burton Ave
545	153-16-09-002.000	113 Hardee Ave
546	153-16-09-003.000	111 Hardee Ave
547	153-16-09-020.000	110 Barlow Dr
548	153-16-09-010.000	107 Stewart Pl
549	153-16-09-013.000	102 Dupont Way
550	153-16-12-012.000	204 Dupont Way
551	153-16-12-017.000	214 Dupont Way
552	153-16-12-020.000	Dupont Way
553	153-12-02-012.000	230 Dupont Way
554	153-12-02-017.000	220 Dupont Way
555	153-12-01-022.000	318 Dupont Way
556	153-12-01-029.000	317 Dupont Way
557	153-12-01-034.000	307 Dupont Way
558	153-12-01-001.000	202 Hardee Ave
559	153-12-01-002.000	204 Hardee Ave
560	153-12-01-016.000	304 Dupont Way
561	153-12-01-045.000	233 Dupont Way
562	153-16-11-013.000	225 Dupont Way
563	153-16-11-014.000	227 Dupont Way
564	153-16-11-015.000	229 Dupont Way
565	153-16-11-016.000	231 Dupont Way
566	153-16-07-002.000	96 Stewart Pl
567	153-16-07-006.000	104 Stewart Pl
568	153-16-07-007.000	106 Stewart Pl
569	153-16-07-008.000	108 Stewart Pl
570	153-16-07-009.000	110 Stewart Pl
571	153-16-07-010.000	112 Stewart Pl
572	153-16-07-011.000	114 Stewart Pl
573	153-16-07-012.000	116 Stewart Pl
574	153-16-07-013.000	118 Stewart Pl
575	153-16-08-004.000	108 Hardee Ave
576	153-16-08-005.000	110 Hardee Ave
577	153-16-08-006.000	112 Hardee Ave
578	153-16-08-007.000	114 Hardee Ave

579	153-16-08-008.000	116 Hardee Ave
580	153-16-08-009.000	118 Hardee Ave
581	153-00-00-102.000	Hardee Ave
582	153-16-09-001.000	117 Hardee Ave
583	153-16-09-018.000	115 Hardee Ave
584	161-04-02-059.000	593 Travelers Blvd
585	161-04-02-014.000	Travelers Blvd
586	161-04-02-015.000	Travelers Blvd
587	161-04-02-016.000	Travelers Blvd
588	161-04-02-034.000	543 Travelers Blvd
589	161-04-02-045.000	565 Travelers Blvd
590	161-08-01-005.017	810 Travelers Blvd
591	161-08-01-005.008	Travelers Blvd Unit D-2
592	161-08-01-005.001	Travelers Blvd
593	162-05-01-001.008	Ladson Rd
594	162-05-01-001.010	Ladson Rd
595	162-05-01-001.011	Ladson Rd
596	162-05-04-014.000	102 Dale Ave
597	162-01-01-007.000	113 Lamie Dr
598	153-17-02-008.000	188 Midland Pkwy Unit 120
599	153-17-01-007.000	188 Midland Pkwy Unit 115
600	153-17-02-007.000	188 Midland Pkwy Unit 119
601	153-17-01-005.000	188 Midland Pkwy Unit 113
602	153-17-01-004.000	188 Midland Pkwy Unit 104
603	153-17-03-003.000	188 Midland Pkwy Unit 111
604	153-17-02-001.000	188 Midland Pkwy Unit 105
605	153-17-02-002.000	188 Midland Pkwy Unit 106
606	153-17-03-002.000	188 Midland Pkwy Unit 110
607	153-17-01-025.000	188 Midland Pkwy Unit 201
608	153-17-02-016.000	188 Midland Pkwy Unit 220
609	153-17-03-016.000	188 Midland Pkwy Unit 224
610	153-17-02-013.000	188 Midland Pkwy Unit 217
611	153-17-02-009.000	188 Midland Pkwy Unit 205
612	153-17-03-014.000	188 Midland Pkwy Unit 222
613	153-17-03-011.000	188 Midland Pkwy Unit 211
614	153-17-01-052.000	188 Midland Pkwy Unit 304
615	153-17-02-017.000	188 Midland Pkwy Unit 305
616	153-17-03-017.000	188 Midland Pkwy Unit 309
617	153-17-02-024.000	188 Midland Pkwy Unit 320
618	153-17-03-024.000	188 Midland Pkwy Unit 324
619	153-17-03-019.000	188 Midland Pkwy Unit 311
620	153-17-03-022.000	188 Midland Pkwy Unit 322
621	153-17-01-078.000	188 Midland Pkwy Unit 416
622	153-17-01-077.000	188 Midland Pkwy Unit 415
623	153-17-02-030.000	188 Midland Pkwy Unit 418

624	153-17-03-028.000	188 Midland Pkwy Unit 412
625	153-17-02-027.000	188 Midland Pkwy Unit 407
626	153-17-02-025.000	188 Midland Pkwy Unit 405
627	153-17-03-038.000	188 Midland Pkwy Unit 522
628	153-17-03-036.000	188 Midland Pkwy Unit 512
629	153-17-03-034.000	188 Midland Pkwy Unit 510
630	153-17-01-013.000	188 Midland Pkwy Unit 105
631	153-17-01-014.000	188 Midland Pkwy Unit 106
632	153-17-01-023.000	188 Midland Pkwy Unit 116
633	153-17-01-017.000	188 Midland Pkwy Unit 110
634	153-17-01-035.000	188 Midland Pkwy Unit 203
635	153-17-01-037.000	188 Midland Pkwy Unit 205
636	153-17-01-043.000	188 Midland Pkwy Unit 212
637	153-17-01-041.000	188 Midland Pkwy Unit 210
638	153-17-01-047.000	188 Midland Pkwy Unit 216
639	153-17-01-120.000	188 Midland Pkwy Unit 604
640	153-17-01-118.000	188 Midland Pkwy Unit 602
641	153-17-01-153.000	188 Midland Pkwy Unit 703
642	153-17-01-163.000	188 Midland Pkwy Unit 714
643	153-17-01-165.000	188 Midland Pkwy Unit 716
644	153-17-01-159.000	188 Midland Pkwy Unit 710
645	153-17-01-141.000	188 Midland Pkwy Unit 628
646	153-17-01-145.000	188 Midland Pkwy Unit 632
647	153-17-01-137.000	188 Midland Pkwy Unit 624
648	153-17-01-103.000	188 Midland Pkwy Unit 501
649	153-17-01-104.000	188 Midland Pkwy Unit 502
650	153-17-01-108.000	188 Midland Pkwy Unit 506
651	153-17-01-116.000	188 Midland Pkwy Unit 517
652	153-17-01-109.000	188 Midland Pkwy Unit 510
653	153-17-01-082.000	188 Midland Pkwy Unit 404
654	153-17-01-090.000	188 Midland Pkwy Unit 413
655	153-17-01-094.000	188 Midland Pkwy Unit 417
656	153-17-01-061.000	188 Midland Pkwy Unit 305
657	153-17-01-059.000	188 Midland Pkwy Unit 303
658	153-17-01-063.000	188 Midland Pkwy Unit 310
659	153-17-01-064.000	188 Midland Pkwy Unit 311
660	153-17-01-065.000	188 Midland Pkwy Unit 312
661	153-17-01-133.000	188 Midland Pkwy Unit 620
662	153-11-11-005.000	112 Summer Trace Dr
663	161-03-09-011.000	108 Brighton Ln
664	161-04-08-003.000	105 Brighton Ln
665	161-04-08-006.000	100 Hasting Way
666	161-04-08-008.000	104 Hasting Way
667	161-04-08-014.000	105 Hasting Way
668	161-08-05-030.000	306 Parish Parc Dr

669	161-08-05-031.000	312 Parish Parc Dr
670	161-08-05-036.000	324 Parish Parc Dr
671	153-16-04-001.000	100 Morgan Pl Unit A-D
672	154-13-06-005.000	107 Burton Ave
673	153-12-02-015.000	224 Dupont Way
674	153-16-12-002.000	203 Hardee Ave
675	153-16-12-007.000	109 Barlow Dr
676	153-12-02-010.000	225 Hardee Ave
677	153-12-01-018.000	308 Dupont Way
678	153-12-01-015.000	302 Dupont Way
679	153-12-01-043.000	237 Dupont Way
680	153-12-01-044.000	235 Dupont Way
681	153-16-11-004.000	207 Dupont Way
682	153-16-07-003.000	98 Stewart Pl
683	153-16-07-004.000	100 Stewart Pl
684	153-16-07-005.000	102 Stewart Pl
685	153-16-08-003.000	106 Hardee Ave
686	154-14-08-001.000	1001 Harrison Rd
687	161-04-02-061.000	597 Travelers Blvd
688	161-04-02-062.000	599 Travelers Blvd
689	161-04-02-026.000	527 Travelers Blvd
690	161-04-02-049.000	573 Travelers Blvd
691	161-08-01-005.020	Travelers Blvd
692	162-05-01-003.004	Ladson Rd
693	162-05-01-003.001	Ladson Rd
694	162-05-04-007.000	109 Claudia Dr
695	162-05-04-012.000	106 Dale Ave
696	153-17-03-007.000	188 Midland Pkwy Unit 123
697	153-17-02-006.000	188 Midland Pkwy Unit 118
698	153-17-03-006.000	188 Midland Pkwy Unit 122
699	153-17-01-029.000	188 Midland Pkwy Unit 213
700	153-17-01-030.000	188 Midland Pkwy Unit 214
701	153-17-02-014.000	188 Midland Pkwy Unit 218
702	153-17-03-029.000	188 Midland Pkwy Unit 421
703	153-17-03-027.000	188 Midland Pkwy Unit 411
704	153-17-01-072.000	188 Midland Pkwy Unit 402
705	153-17-03-037.000	188 Midland Pkwy Unit 521
706	153-17-02-036.000	188 Midland Pkwy Unit 508
707	153-17-03-035.000	188 Midland Pkwy Unit 511
708	153-17-01-012.000	188 Midland Pkwy Unit 104
709	153-17-01-019.000	188 Midland Pkwy Unit 112
710	153-17-01-039.000	188 Midland Pkwy Unit 207
711	153-17-01-046.000	188 Midland Pkwy Unit 215
712	153-17-01-151.000	188 Midland Pkwy Unit 701
713	153-17-01-144.000	188 Midland Pkwy Unit 631

714	153-17-01-105.000	188 Midland Pkwy Unit 503
715	153-17-01-112.000	188 Midland Pkwy Unit 513
716	153-17-01-084.000	188 Midland Pkwy Unit 406
717	153-17-01-091.000	188 Midland Pkwy Unit 414
718	153-17-01-058.000	188 Midland Pkwy Unit 302
719	153-17-01-068.000	188 Midland Pkwy Unit 315
720	161-00-00-126.000	301 Crosscreek Dr
721	161-04-03-006.000	Old Trolley Rd
722	153-00-00-089.000	Hardee Ave
723	161-03-08-018.000	401 Parish Parc Dr
724	161-04-09-001.000	403 Parish Parc Dr
725	161-04-02-001.000	Travelers Blvd
726	161-08-01-029.000	209 Parish Parc Dr
727	161-08-01-030.000	301 Parish Parc Dr
728	162-01-08-002.000	132 Tranquil Ln
729	162-01-08-006.000	124 Tranquil Ln
730	161-04-07-006.000	302 Springview Ln Unit 3
731	161-04-07-005.000	302 Springview Ln Unit 2
732	161-04-07-007.000	302 Springview Ln Unit 4
733	161-04-07-015.000	302 Springview Ln Unit 12
734	161-04-07-008.000	302 Springview Ln Unit 5
735	161-04-07-009.000	302 Springview Ln Unit 6
736	161-04-07-010.000	302 Springview Ln Unit 7
737	161-04-07-018.000	1704 Old Trolley Rd
738	161-08-05-011.000	110 Ruston Pl
739	161-08-03-005.000	9986 Dorchester Rd
740	161-03-08-043.000	117 St Phillips Row
741	153-15-10-042.000	125 Melanie Ln
742	153-15-10-022.000	158 Willowbend Ln
743	153-15-11-020.000	175 Willowbend Ln
744	161-03-08-001.000	325 Parish Parc Dr
745	153-15-10-021.000	156 Willowbend Ln
746	153-15-11-021.000	177 Willowbend Ln
747	161-03-08-004.000	331 Parish Parc Dr
748	161-04-01-005.000	301 Oakbrook Ln
749	161-04-01-011.000	801 Travelers Blvd
750	161-04-01-001.000	Oakbrook Ln
751	161-04-01-002.000	Oakbrook Ln
752	161-04-01-004.000	Oakbrook Ln
753	161-04-01-003.000	Oakbrook Ln
754	161-04-01-012.000	827 Travelers Blvd
755	161-04-01-015.000	Travelers Blvd
756	161-04-01-013.000	829 Travelers Blvd
757	153-00-00-104.000	1530 Old Trolley Rd
758	153-15-10-044.000	121 Melanie Ln

759	153-15-10-045.000	119 Melanie Ln
760	153-15-10-046.000	117 Melanie Ln
761	161-04-07-004.000	302 Springview Ln Unit 1
762	161-04-07-013.000	302 Springview Ln Unit 10
763	161-04-07-014.000	302 Springview Ln Unit 11
764	161-04-07-012.000	302 Springview Ln Unit 9
765	161-04-07-011.000	302 Springview Ln Unit 8
766	153-16-04-007.000	102 Harth Pl
767	161-04-01-006.000	Oakbrook Ln
768	161-04-01-008.000	1806 Old Trolley Rd
769	161-04-01-010.000	701 Travelers Blvd
770	161-04-01-007.000	Oakbrook Ln
771	161-04-01-009.000	1810 Old Trolley Rd
772	161-04-07-017.000	1706 Old Trolley Rd
773	161-04-02-007.000	Oakbrook Ln
774	153-00-00-093.000	1520 Old Trolley Rd
775	153-15-10-047.000	115 Melanie Ln
776	153-11-13-007.000	113 Melanie Ln
777	153-11-13-006.000	111 Melanie Ln
778	153-11-13-005.000	109 Melanie Ln
779	153-11-13-004.000	107 Melanie Ln
780	153-11-13-003.000	105 Melanie Ln
781	153-11-13-002.000	103 Melanie Ln
782	153-00-00-101.000	1510 Old Trolley Rd
783	153-00-00-133.000	1516 Old Trolley Rd
784	161-04-08-010.000	108 Hasting Way
785	161-08-05-023.000	112 Nottingham Ct
786	161-04-08-011.000	110 Hasting Way
787	161-04-08-012.000	109 Hasting Way
788	161-08-05-022.000	110 Nottingham Ct
789	153-00-00-099.000	188 Midland Pkwy Unit 105
790	153-16-12-011.000	202 Dupont Way
791	153-16-12-008.000	107 Barlow Dr
792	161-12-01-003.000	106 Park Ln
793	161-08-01-028.000	207 Parish Parc Dr
794	161-04-11-005.000	109 Winslow Ln
795	161-04-03-004.000	1668 Old Trolley Rd
796	161-04-03-003.000	1664 Old Trolley Rd
797	161-04-03-001.000	901 Travelers Blvd
798	161-04-09-006.000	413 Parish Parc Dr
799	161-03-08-030.000	140 St Phillips Row
800	161-03-08-031.000	144 St Phillips Row
801	161-03-08-032.000	148 St Phillips Row
802	161-03-08-034.000	153 St Phillips Row
803	161-03-08-036.000	145 St Phillips Row

804	161-03-08-037.000	141 St Phillips Row
805	161-03-08-033.000	St Phillips Row
806	161-03-08-035.000	149 St Phillips Row
807	161-04-10-007.000	112 Winslow Ln
808	161-04-10-006.000	110 Winslow Ln
809	161-03-08-013.000	351 Parish Parc Dr
810	161-03-08-014.000	353 Parish Parc Dr
811	161-03-08-009.000	343 Parish Parc Dr
812	161-03-08-008.000	341 Parish Parc Dr
813	161-03-08-010.000	345 Parish Parc Dr
814	161-03-08-007.000	339 Parish Parc Dr
815	161-04-09-003.000	407 Parish Parc Dr
816	161-04-09-004.000	409 Parish Parc Dr
817	161-04-11-006.000	111 Winslow Ln
818	161-04-11-001.000	101 Winslow Ln
819	161-04-10-001.000	100 Winslow Ln
820	153-15-06-002.000	115 Winslow Ln
821	153-15-06-003.000	117 Winslow Ln
822	153-16-03-004.000	106 Kimeran Ln Unit A
823	153-16-03-025.000	104 Kimeran Ln Unit C
824	153-16-03-026.000	104 Kimeran Ln Unit D
825	153-16-03-024.000	104 Kimeran Ln Unit B
826	153-16-03-021.000	102 Kimeran Ln Unit B
827	153-16-03-019.000	100 Kimeran Ln Unit C
828	153-16-03-022.000	102 Kimeran Ln Unit C
829	153-16-03-002.000	102 Kimeran Ln Unit A
830	153-16-03-020.000	100 Kimeran Ln Unit D
831	153-11-12-032.000	111 Willowbend Ln
832	153-11-12-033.000	113 Willowbend Ln
833	153-11-12-034.000	115 Willowbend Ln
834	153-15-11-001.000	117 Willowbend Ln
835	153-11-12-009.000	115 Summer Trace Dr
836	153-11-11-008.000	118 Summer Trace Dr
837	153-11-12-010.000	113 Summer Trace Dr
838	153-11-12-012.000	109 Summer Trace Dr
839	153-11-12-023.000	107 Rosedale Ct
840	153-11-12-021.000	110 Rosedale Ct
841	153-11-12-020.000	108 Rosedale Ct
842	153-11-12-019.000	106 Rosedale Ct
843	153-11-12-018.000	104 Rosedale Ct
844	153-11-12-024.000	105 Rosedale Ct
845	153-11-13-001.000	101 Melanie Ln
846	153-11-12-016.000	100 Rosedale Ct
847	153-15-10-008.000	130 Willowbend Ln
848	153-15-10-027.000	166 Willowbend Ln

849	153-11-11-029.000	112 Willowbend Ln
850	153-11-12-031.000	109 Willowbend Ln
851	153-15-11-002.000	119 Willowbend Ln
852	153-15-11-003.000	121 Willowbend Ln
853	153-15-11-004.000	123 Willowbend Ln
854	153-15-10-002.000	118 Willowbend Ln
855	153-11-11-030.000	114 Willowbend Ln
856	153-15-10-001.000	116 Willowbend Ln
857	153-15-10-004.000	122 Willowbend Ln
858	153-15-10-006.000	126 Willowbend Ln
859	153-15-11-006.000	127 Willowbend Ln
860	153-11-11-025.000	104 Willowbend Ln
861	153-11-11-026.000	106 Willowbend Ln
862	153-11-11-027.000	108 Willowbend Ln
863	153-11-12-030.000	107 Willowbend Ln
864	153-11-11-019.000	140 Summer Trace Dr
865	153-11-11-023.000	133 Summer Trace Dr
866	153-11-11-018.000	138 Summer Trace Dr
867	153-11-11-020.000	142 Summer Trace Dr
868	153-11-11-021.000	144 Summer Trace Dr
869	153-11-11-022.000	135 Summer Trace Dr
870	153-11-11-028.000	110 Willowbend Ln
871	153-15-10-005.000	124 Willowbend Ln
872	153-15-06-005.000	126 Winslow Ln
873	161-08-05-026.000	107 Nottingham Ct
874	161-08-05-020.000	106 Nottingham Ct
875	161-08-01-019.000	111 Parish Parc Dr
876	161-08-01-018.000	109 Parish Parc Dr
877	161-08-01-017.000	107 Parish Parc Dr
878	161-08-01-016.000	105 Parish Parc Dr
879	161-08-01-033.000	307 Parish Parc Dr
880	161-03-09-001.000	326 Parish Parc Dr
881	161-08-01-002.000	10106 Dorchester Rd
882	161-08-02-003.000	10020 Dorchester Rd
883	161-08-02-019.000	10016 Dorchester Rd
884	161-08-02-004.000	10012 Dorchester Rd
885	161-08-02-014.000	10008 Dorchester Rd
886	162-05-01-004.000	Ladson Rd
887	162-05-01-017.000	104 Branton Ave
888	162-05-03-004.000	103 Branton Ave
889	162-05-03-003.000	101 Branton Ave
890	162-05-01-006.000	105 Alma Dr
891	162-05-01-007.000	107 Alma Dr
892	162-05-01-008.000	109 Alma Dr
893	161-08-03-001.000	103 Ladson Rd

894	161-08-02-015.000	1915 Old Trolley Rd
895	161-08-02-012.000	Old Trolley Rd
896	161-08-02-007.000	760 Travelers Blvd
897	161-08-02-008.000	1905 Old Trolley Rd
898	161-08-02-016.000	768 Travelers Blvd
899	161-08-01-004.000	1900 Old Trolley Rd
900	161-04-05-004.000	1801 Old Trolley Rd
901	161-04-05-001.000	1815 Old Trolley Rd
902	161-00-00-069.000	Ladson Rd
903	162-05-04-004.000	103 Claudia Dr
904	162-05-03-014.000	102 Claudia Dr
905	162-05-03-001.000	100 Claudia Dr
906	162-05-04-003.000	101 Claudia Dr
907	162-05-04-002.000	Ladson Rd
908	162-05-04-001.000	100 Dale Ave
909	162-05-06-001.000	101 Dale Ave
910	162-05-06-014.000	100 Lamie Dr
911	162-01-08-003.000	134 Tranquil Ln
912	162-01-04-011.000	116 Washington Dr
913	162-01-04-004.000	103 Hamlet Ln
914	162-01-04-005.000	105 Hamlet Ln
915	162-01-06-001.000	1071 Harrison Rd
916	162-01-03-012.000	110 Hamlet Ln
917	162-01-03-007.000	100 Hamlet Ln
918	162-01-03-001.000	101 Richter Dr
919	162-01-03-008.000	102 Hamlet Ln
920	162-01-03-002.000	103 Richter Dr
921	162-01-03-009.000	104 Hamlet Ln
922	162-01-03-003.000	105 Richter Dr
923	162-01-03-010.000	106 Hamlet Ln
924	162-01-03-004.000	107 Richter Dr
925	162-01-03-011.000	108 Hamlet Ln
926	162-01-03-005.000	109 Richter Dr
927	162-01-03-006.000	111 Richter Dr
928	162-01-02-001.000	101 Henrietta St
929	162-01-02-010.000	102 Richter Dr
930	162-01-02-002.000	103 Henrietta St
931	162-01-02-005.000	109 Henrietta St
932	162-01-02-007.000	113 Henrietta St
933	162-01-02-008.000	115 Henrietta St
934	162-01-02-006.000	111 Henrietta St
935	162-01-02-013.000	108 Richter Dr
936	162-01-02-014.000	110 Richter Dr
937	162-01-02-015.000	112 Richter Dr
938	162-01-02-004.000	107 Henrietta St

939	162-01-02-012.000	106 Richter Dr
940	162-01-02-003.000	105 Henrietta St
941	162-01-02-011.000	104 Richter Dr
942	162-01-01-009.000	100 Henrietta St
943	162-01-01-001.000	101 Lamie Dr
944	162-01-01-010.000	102 Henrietta St
945	162-01-01-011.000	104 Henrietta St
946	162-01-01-002.000	103 Lamie Dr
947	162-01-01-004.000	107 Lamie Dr
948	162-01-01-003.000	105 Lamie Dr
949	162-01-01-012.000	106 Henrietta St
950	162-01-01-016.000	114 Henrietta St
951	162-01-01-015.000	112 Henrietta St
952	162-01-01-014.000	110 Henrietta St
953	162-01-01-013.000	108 Henrietta St
954	161-00-00-068.000	Ladson Rd
955	162-01-02-009.000	100 Richter Dr
956	162-01-04-015.000	108 Washington Dr
957	162-01-04-016.000	106 Washington Dr
958	162-01-04-017.000	104 Washington Dr
959	162-01-05-018.000	102 Adams Ave
960	162-01-05-004.000	103 Washington Dr
961	162-01-05-005.000	105 Washington Dr
962	162-01-05-006.000	107 Washington Dr
963	162-01-05-007.000	109 Washington Dr
964	162-01-05-008.000	111 Washington Dr
965	162-01-05-010.000	115 Washington Dr
966	162-01-05-012.000	114 Adams Ave
967	162-01-05-011.000	1064 Harrison Rd
968	162-01-05-009.000	113 Washington Dr
969	162-01-05-013.000	112 Adams Ave
970	162-01-05-014.000	110 Adams Ave
971	162-01-05-015.000	108 Adams Ave
972	162-01-05-016.000	106 Adams Ave
973	162-01-05-017.000	104 Adams Ave
974	162-01-04-003.000	101 Hamlet Ln
975	162-01-04-002.000	4407 Ladson Rd
976	162-01-04-001.000	102 Washington Dr
977	162-01-05-003.000	101 Washington Dr
978	162-01-05-001.000	100 Adams Ave
979	162-01-05-002.000	4401 Ladson Rd
980	162-01-10-003.000	101 Jefferson Ln
981	162-05-11-009.000	Alma Dr
982	162-05-11-018.000	9930 Dorchester Rd
983	162-05-11-010.000	Dorchester Rd

984	162-05-11-040.000	146 Alma Dr
985	161-04-07-002.000	125 Crosscreek Dr
986	161-04-07-001.000	300 Springview Ln
987	154-00-00-033.000	325 Midland Pkwy
988	154-00-00-056.000	325 Midland Pkwy
989	154-13-05-001.000	4214 Ladson Rd
990	154-00-00-034.000	Springview Ln
991	162-01-14-001.000	Springview Ln
992	154-00-00-065.000	85 Springview Ln
993	153-16-12-004.000	115 Barlow Dr
994	153-16-11-011.000	Dupont Way
995	153-16-11-009.000	217 Dupont Way
996	153-16-08-002.000	104 Hardee Ave
997	153-12-01-025.000	325 Dupont Way
998	153-12-01-008.000	216 Hardee Ave
999	153-12-02-009.000	223 Hardee Ave
1000	153-16-08-010.000	122 Hardee Ave
1001	153-11-12-001.000	131 Summer Trace Dr
1002	153-15-08-016.000	101 Northpark Ave
1003	153-15-08-019.000	107 Northpark Ave
1004	153-15-08-020.000	109 Northpark Ave
1005	153-15-08-025.000	Northpark Ave
1006	153-15-09-005.000	108 Northpark Ave
1007	153-15-09-007.000	112 Northpark Ave
1008	153-15-09-008.000	114 Northpark Ave
1009	153-15-08-021.000	111 Northpark Ave
1010	153-15-08-022.000	113 Northpark Ave
1011	153-15-09-004.000	106 Northpark Ave
1012	153-15-09-006.000	110 Northpark Ave
1013	153-15-09-011.000	120 Northpark Ave
1014	153-15-09-015.000	130 Northpark Ave
1015	153-15-08-058.000	123 Northpark Ave
1016	153-15-08-057.000	121 Northpark Ave
1017	153-15-08-056.000	119 Northpark Ave
1018	153-15-09-012.000	122 Northpark Ave
1019	153-11-14-005.000	134 Northpark Ave
1020	153-15-08-059.000	125 Northpark Ave
1021	153-11-14-006.000	132 Northpark Ave
1022	153-15-09-014.000	128 Northpark Ave
1023	153-15-08-065.000	137 Northpark Ave
1024	153-15-08-062.000	131 Northpark Ave
1025	153-15-08-061.000	129 Northpark Ave
1026	153-15-08-063.000	133 Northpark Ave
1027	153-15-07-011.000	136 Summer Ridge Dr
1028	153-11-14-007.000	Northpark Ave

1029	153-15-08-060.000	127 Northpark Ave
1030	153-15-08-018.000	105 Northpark Ave
1031	153-15-08-017.000	103 Northpark Ave
1032	153-15-08-015.000	99 Northpark Ave
1033	153-15-08-014.000	97 Northpark Ave
1034	153-15-08-013.000	95 Northpark Ave
1035	153-15-08-012.000	96 Northpark Ave
1036	153-15-09-003.000	104 Northpark Ave
1037	153-15-09-002.000	102 Northpark Ave
1038	153-15-07-006.000	116 Summer Ridge Dr
1039	153-15-07-004.000	104 Summer Ridge Dr
1040	153-15-07-005.000	106 Summer Ridge Dr
1041	153-15-08-024.000	117 Northpark Ave
1042	153-15-08-023.000	115 Northpark Ave
1043	153-15-09-009.000	116 Northpark Ave
1044	161-04-02-089.000	Oakbrook Ln
1045	161-04-02-008.000	Oakbrook Ln
1046	153-00-00-051.000	1595 Old Trolley Rd
1047	153-00-00-075.000	1590 Old Trolley Rd
1048	153-00-00-074.000	1580 Old Trolley Rd
1049	153-00-00-077.000	1570 Old Trolley Rd
1050	153-16-03-018.000	100 Kimeran Ln Unit B
1051	153-16-03-001.000	100 Kimeran Ln Unit A
1052	153-00-00-076.000	950 Travelers Blvd
1053	153-16-02-004.000	101 Kimeran Ln Unit C
1054	153-16-02-005.000	101 Kimeran Ln Unit B
1055	153-16-02-009.000	103 Kimeran Ln Unit A
1056	153-16-02-003.000	105 Kimeran Ln Unit D
1057	153-16-03-003.000	104 Kimeran Ln Unit A
1058	153-16-03-023.000	102 Kimeran Ln Unit D
1059	161-08-02-013.000	Travelers Blvd
1060	161-08-02-020.000	Travelers Blvd
1061	161-12-01-005.000	101 Park Ln
1062	161-04-02-075.000	379 Springview Ln
1063	161-03-08-006.000	337 Parish Parc Dr
1064	161-04-07-019.000	1700 Old Trolley Rd
1065	153-15-11-005.000	125 Willowbend Ln
1066	153-15-07-009.000	128 Summer Ridge Dr
1067	153-11-14-003.000	138 Northpark Ave
1068	153-11-14-004.000	136 Northpark Ave
1069	153-11-14-002.000	140 Northpark Ave
1070	153-15-08-064.000	135 Northpark Ave
1071	153-15-07-012.000	140 Summer Ridge Dr
1072	153-15-07-007.000	120 Summer Ridge Dr
1073	153-15-11-022.000	179 Willowbend Ln

1074	161-12-01-004.000	107 Park Ln
1075	161-04-02-054.000	583 Travelers Blvd
1076	161-04-10-008.000	114 Winslow Ln
1077	153-15-07-008.000	124 Summer Ridge Dr
1078	153-15-09-013.000	124 Northpark Ave
1079	161-08-02-018.000	710 Travelers Blvd
1080	161-04-02-052.000	579 Travelers Blvd
1081	153-11-12-013.000	107 Summer Trace Dr
1082	153-11-12-026.000	101 Rosedale Ct
1083	153-15-06-010.000	116 Winslow Ln
1084	153-15-10-026.000	Northpark Ave
1085	153-11-14-001.000	139 Northpark Ave
1086	153-15-07-010.000	132 Summer Ridge Dr
1087	153-15-10-037.000	186 Willowbend Ln
1088	161-08-02-021.000	716 Travelers Blvd
1089	161-08-02-009.000	717 Travelers Blvd
1090	161-04-05-006.000	765 Travelers Blvd
1091	161-00-00-114.000	763 Travelers Blvd Unit F
1092	161-00-00-111.000	763 Travelers Blvd
1093	161-00-00-120.000	763 Travelers Blvd Unit D&E
1094	161-00-00-119.000	763 Travelers Blvd Unit C
1095	161-00-00-118.000	763 Travelers Blvd Unit A&B
1096	162-05-02-006.000	100 Tranquil Ln
1097	162-05-02-018.000	102 Tranquil Ln
1098	162-05-02-017.000	104 Tranquil Ln
1099	162-05-02-009.000	116 Tranquil Ln
1100	162-05-02-010.000	Tranquil Ln
1101	162-05-02-011.000	118 Tranquil Ln
1102	162-05-02-007.000	112 Tranquil Ln
1103	153-16-10-006.000	109 Dupont Way
1104	153-16-10-005.000	105 Dupont Way
1105	153-16-10-002.000	103 Dupont Way
1106	162-05-02-014.000	110 Tranquil Ln
1107	162-05-02-016.000	106 Tranquil Ln
1108	162-05-02-005.000	Tranquil Ln
1109	162-05-02-015.000	108 Tranquil Ln
1110	161-03-08-015.000	355 Parish Parc Dr
1111	999-00-00-001.000	
1112	153-16-04-008.000	105 Harth Pl Unit A
1113	153-16-04-009.000	103 Harth Pl Unit A
1114	153-16-04-010.000	101 Harth Pl
1115	153-16-06-007.000	208 Ashford Cir
1116	153-16-06-001.000	108 Ashford Cir
1117	153-16-06-002.000	110 Ashford Cir
1118	153-16-06-003.000	112 Ashford Cir

1119	153-16-06-011.000	304 Ashford Cir
1120	153-16-06-009.000	214 Ashford Cir
1121	153-16-06-010.000	216 Ashford Cir
1122	153-16-06-012.000	306 Ashford Cir
1123	153-16-06-008.000	212 Ashford Cir
1124	153-16-06-005.000	116 Ashford Cir
1125	153-16-06-004.000	114 Ashford Cir
1126	153-16-06-006.000	120 Ashford Cir
1127	153-16-06-013.000	310 Ashford Cir
1128	153-16-04-033.000	219 Ashford Cir
1129	153-16-04-032.000	217 Ashford Cir
1130	153-16-04-031.000	215 Ashford Cir
1131	153-16-04-030.000	213 Ashford Cir
1132	153-16-04-028.000	209 Ashford Cir
1133	153-16-04-029.000	211 Ashford Cir
1134	153-16-04-027.000	207 Ashford Cir
1135	153-16-04-026.000	205 Ashford Cir
1136	153-16-04-025.000	203 Ashford Cir
1137	153-16-04-024.000	201 Ashford Cir
1138	153-16-04-037.000	301 Ashford Cir
1139	153-16-04-038.000	303 Ashford Cir
1140	153-16-04-039.000	305 Ashford Cir
1141	153-16-04-040.000	307 Ashford Cir
1142	153-16-04-043.000	313 Ashford Cir
1143	153-16-04-041.000	309 Ashford Cir
1144	153-16-04-042.000	311 Ashford Cir
1145	153-16-04-034.000	221 Ashford Cir
1146	153-16-04-036.000	223 Ashford Cir
1147	153-16-04-018.000	113 Ashford Cir
1148	153-16-04-002.000	102 Morgan Pl
1149	153-16-04-015.000	107 Ashford Cir
1150	153-16-04-012.000	101 Ashford Cir
1151	153-16-04-017.000	111 Ashford Cir
1152	153-00-00-103.000	102 Bentons Lodge Rd
1153	153-16-04-014.000	105 Ashford Cir
1154	153-16-04-016.000	109 Ashford Cir
1155	153-16-04-013.000	103 Ashford Cir
1156	999-00-00-001.000	
1157	153-16-04-003.000	104 Morgan Pl Unit A
1158	153-16-04-011.888	Ashford Cir
1159	153-16-04-004.000	103 Morgan Pl
1160	154-13-08-002.000	296 Midland Pkwy
1161	153-15-08-008.000	125 Summer Ridge Dr
1162	153-15-08-029.000	107 Walden Ridge Way
1163	153-15-08-030.000	109 Walden Ridge Way

1164	161-00-00-071.000	4570 Ladson Rd
1165	161-00-00-072.000	4488 Ladson Rd
1166	161-00-00-029.000	10155 Dorchester Rd
1167	161-00-00-093.000	10125 Dorchester Rd
1168	161-00-00-086.000	10155 Dorchester Rd
1169	161-07-08-009.000	Parish Parc Dr
1170	161-08-01-012.000	Dorchester Rd
1171	161-08-01-008.000	10160 Dorchester Rd
1172	161-08-01-011.000	10170 Dorchester Rd
1173	161-00-00-030.000	State Park Rd
1174	153-00-00-058.000	1601 Old Trolley Rd
1175	153-00-00-106.000	Bentons Lodge Rd
1176	153-00-00-105.000	Old Trolley Rd
1177	161-04-06-002.000	Old Trolley Rd
1178	153-16-01-004.000	107 Timber Ln Unit A
1179	153-16-01-005.000	109 Timber Ln Unit A
1180	153-16-01-006.000	111 Timber Ln Unit A
1181	153-16-01-007.000	113 Timber Ln Unit A
1182	153-16-01-002.000	103 Timber Ln Unit A
1183	153-16-01-003.000	105 Timber Ln Unit A
1184	153-16-01-001.000	101 Timber Ln Unit A
1185	153-16-01-016.000	100 Timber Ln Unit A
1186	153-16-01-015.000	102 Timber Ln Unit A
1187	153-16-01-014.000	104 Timber Ln Unit A
1188	153-16-01-013.000	106 Timber Ln Unit A
1189	153-16-01-012.000	108 Timber Ln Unit A
1190	153-16-01-011.000	110 Timber Ln Unit A
1191	153-16-01-010.000	112 Timber Ln Unit A
1192	153-00-00-026.000	1600 Old Trolley Rd
1193	153-00-00-028.000	1660 Old Trolley Rd
1194	153-16-03-029.000	106 Kimeran Ln Unit D
1195	153-16-03-005.000	108 Kimeran Ln Unit A
1196	153-16-03-030.000	108 Kimeran Ln Unit B
1197	153-16-03-015.000	105 Muir Ct
1198	153-16-03-059.000	103 Muir Ct Unit D
1199	153-16-03-016.000	103 Muir Ct Unit A
1200	153-16-03-058.000	103 Muir Ct Unit C
1201	153-16-03-057.000	103 Muir Ct Unit B
1202	153-16-03-038.000	112 Kimeran Ln Unit D
1203	153-16-03-039.000	100 Muir Ct Unit B
1204	153-16-03-037.000	112 Kimeran Ln Unit C
1205	153-16-03-040.000	100 Muir Ct Unit C
1206	153-16-03-036.000	112 Kimeran Ln Unit B
1207	153-16-03-041.000	100 Muir Ct Unit D
1208	153-16-03-007.000	112 Kimeran Ln Unit A

1209	153-16-03-009.000	102 Muir Ct Unit A
1210	153-16-03-042.000	102 Muir Ct Unit B
1211	153-16-03-035.000	110 Kimeran Ln Unit D
1212	153-16-03-043.000	102 Muir Ct Unit C
1213	153-16-03-010.000	104 Muir Ct Unit A
1214	153-16-03-033.000	110 Kimeran Ln Unit B
1215	153-16-03-034.000	110 Kimeran Ln Unit C
1216	153-16-03-044.000	102 Muir Ct Unit D
1217	153-16-03-006.000	110 Kimeran Ln Unit A
1218	153-16-03-032.000	108 Kimeran Ln Unit D
1219	153-16-03-031.000	108 Kimeran Ln Unit C
1220	153-16-03-065.000	104 Muir Ct Unit D
1221	153-16-03-011.000	106 Muir Ct Unit A
1222	153-16-03-045.000	106 Muir Ct Unit B
1223	153-16-03-046.000	106 Muir Ct Unit C
1224	153-16-03-028.000	106 Kimeran Ln Unit C
1225	153-16-03-027.000	106 Kimeran Ln Unit B
1226	153-16-01-009.000	114 Timber Ln Unit A
1227	153-16-01-008.000	115 Timber Ln Unit A
1228	154-00-00-028.000	205 Midland Pkwy Unit 205
1229	154-13-06-001.000	295 Midland Pkwy
1230	154-00-00-021.000	188 Midland Pkwy Unit 225
1231	162-01-04-014.000	110 Washington Dr
1232	162-01-04-012.000	114 Washington Dr
1233	162-01-04-013.000	112 Washington Dr
1234	162-01-04-009.000	Hamlet Ln
1235	162-01-04-008.000	111 Hamlet Ln
1236	162-01-04-006.000	107 Hamlet Ln
1237	162-01-04-007.000	109 Hamlet Ln
1238	162-01-04-010.000	113 Hamlet Ln
1239	153-00-00-122.000	188 Midland Pkwy
1240	161-04-04-007.000	1705 Old Trolley Rd
1241	161-04-04-008.000	1709 Old Trolley Rd
1242	161-04-06-001.000	Crosscreek Dr
1243	161-04-06-006.000	112 Springview Ln
1244	161-04-06-005.000	106 Springview Ln
1245	161-04-04-001.000	Old Trolley Rd
1246	161-04-06-007.000	Springview Ln
1247	161-04-02-019.000	Travelers Blvd
1248	161-04-03-005.000	Old Trolley Rd
1249	161-04-02-053.000	581 Travelers Blvd
1250	161-04-02-040.000	555 Travelers Blvd
1251	161-12-01-006.000	148 Old Dorchester Trl
1252	161-04-03-002.000	Crosscreek Dr
1253	161-03-08-019.000	Parish Parc Dr

1254	153-12-01-012.000	224 Hardee Ave
1255	153-15-07-003.000	102 Summer Ridge Dr
1256	153-15-09-010.000	118 Northpark Ave
1257	154-00-00-051.000	90 Springview Ln
1258	161-04-04-006.000	1711 Old Trolley Rd
1259	153-16-03-051.000	109 Muir Ct Unit B
1260	153-00-00-137.000	Old Trolley Rd
1261	153-16-05-001.000	255 Midland Pkwy
1262	161-04-02-036.000	547 Travelers Blvd
1263	161-04-02-024.000	523 Travelers Blvd
1264	161-04-02-076.000	377 Springview Ln
1265	153-16-04-023.000	123 Ashford Cir
1266	161-04-02-021.000	517 Travelers Blvd
1267	161-04-02-039.000	553 Travelers Blvd
1268	161-04-02-077.000	375 Springview Ln
1269	161-04-02-055.000	Travelers Blvd
1270	153-15-08-010.000	133 Summer Ridge Dr
1271	153-16-03-064.000	104 Muir Ct Unit C
1272	153-16-03-063.000	104 Muir Ct Unit B
1273	153-16-03-014.000	107 Muir Ct Unit A
1274	153-16-03-012.000	108 Muir Ct Unit A
1275	161-04-02-037.000	549 Travelers Blvd
1276	161-04-02-023.000	Travelers Blvd
1277	161-04-02-070.000	389 Springview Ln
1278	161-04-02-073.000	383 Springview Ln
1279	161-04-02-074.000	381 Springview Ln
1280	153-16-04-035.888	Ashford Cir
1281	161-04-02-069.000	391 Springview Ln
1282	161-04-02-038.000	551 Travelers Blvd
1283	161-04-02-022.000	519 Travelers Blvd
1284	161-04-02-068.000	393 Springview Ln
1285	153-15-08-009.000	129 Summer Ridge Dr
1286	154-13-08-001.000	298 Midland Pkwy
1287	153-16-03-017.000	101 Muir Ct Unit A
1288	153-16-03-047.000	106 Muir Ct Unit D
1289	153-16-03-013.000	109 Muir Ct Unit A
1290	153-16-03-052.000	109 Muir Ct Unit C
1291	153-16-03-053.000	109 Muir Ct Unit D
1292	153-00-00-136.000	Old Trolley Rd
1293	161-04-04-002.000	1713 Old Trolley Rd
1294	153-15-09-001.000	100 Northpark Ave
1295	161-08-01-007.000	1940 Old Trolley Rd
1296	161-08-01-023.000	119 Parish Parc Dr
1297	161-08-01-022.000	117 Parish Parc Dr
1298	161-08-01-021.000	115 Parish Parc Dr

1299	161-08-01-020.000	113 Parish Parc Dr
1300	161-08-01-026.000	203 Parish Parc Dr
1301	161-08-01-027.000	205 Parish Parc Dr
1302	161-08-01-025.000	201 Parish Parc Dr
1303	161-08-01-024.000	121 Parish Parc Dr
1304	153-16-09-006.000	105 Hardee Ave
1305	153-16-09-007.000	101 Hardee Ave
1306	153-16-11-017.000	Dupont Way
1307	153-16-10-003.000	107 Dupont Way
1308	153-00-00-079.000	Old Trolley Rd
1309	154-00-00-027.000	188 Midland Pkwy
1310	153-11-12-022.000	109 Rosedale Ct
1311	153-11-12-027.000	Melanie Ln
1312	153-16-10-001.000	101 Dupont Way
1313	153-16-10-007.000	111 Dupont Way
1314	153-16-11-001.000	201 Dupont Way
1315	153-16-11-006.000	211 Dupont Way
1316	153-16-11-007.000	213 Dupont Way
1317	153-16-11-008.000	215 Dupont Way
1318	153-16-07-016.000	124 Stewart Pl
1319	153-16-08-001.000	102 Hardee Ave
1320	153-16-10-004.000	Midland Pkwy
1321	153-16-09-012.000	103 Stewart Pl
1322	153-15-07-002.000	100 Summer Ridge Dr
1323	153-15-07-001.000	129 Summer Ridge Dr
1324	153-00-00-140.000	Old Trolley Rd
1325	154-00-00-041.000	75 Springview Ln
1326	161-00-00-066.000	10115 Dorchester Rd
1327	161-00-00-043.000	10105 Dorchester Rd
1328	161-00-00-115.000	2008 Old Trolley Rd
1329	161-00-00-037.000	10095 Dorchester Rd
1330	153-15-08-026.000	101 Walden Ridge Way
1331	161-04-02-081.000	325 Springview Ln
1332	161-00-00-038.000	900 Crosscreek Dr
1333	161-04-02-066.000	397 Springview Ln
1334	161-04-02-079.000	371 Springview Ln
1335	161-04-02-071.000	387 Springview Ln
1336	161-04-02-072.000	385 Springview Ln
1337	161-08-04-003.000	10005 Dorchester Rd
1338	161-00-00-082.000	4850 Ladson Rd
1339	161-03-08-011.000	347 Parish Parc Dr
1340	161-03-08-012.000	349 Parish Parc Dr
1341	161-04-11-003.000	105 Winslow Ln
1342	161-08-01-006.000	Old Trolley Rd
1343	161-08-01-001.000	10150 Dorchester Rd

1344	162-05-11-023.000	9980 Dorchester Rd
1345	153-00-00-092.000	188 Midland Pkwy
1346	153-15-06-004.000	128 Winslow Ln
1347	153-15-06-007.000	122 Winslow Ln
1348	153-15-06-008.000	120 Winslow Ln
1349	153-15-08-007.000	121 Summer Ridge Dr
1350	153-15-08-003.000	105 Summer Ridge Dr
1351	153-15-08-002.000	101 Summer Ridge Dr
1352	153-15-05-001.000	920 Travelers Blvd
1353	153-15-08-011.000	98 Northpark Ave
1354	161-04-02-064.000	1708 Old Trolley Rd Unit A-C
1355	154-00-00-053.000	Springview Ln
1356	153-15-08-028.000	105 Walden Ridge Way
1357	153-15-08-027.000	103 Walden Ridge Way
1358	153-15-08-036.000	121 Walden Ridge Way
1359	153-15-08-051.000	108 Walden Ridge Way
1360	161-00-00-044.000	2007 Old Trolley Rd
1361	161-04-02-082.000	323 Springview Ln
1362	161-04-02-087.000	313 Springview Ln
1363	162-05-11-024.000	9976 Dorchester Rd
1364	161-04-02-080.000	369 Springview Ln
1365	161-04-02-012.000	Travelers Blvd
1366	161-04-02-078.000	373 Springview Ln
1367	161-04-02-065.000	399 Springview Ln
1368	161-04-10-003.000	104 Winslow Ln
1369	161-08-01-003.000	1990 Old Trolley Rd
1370	161-00-00-036.000	111 Springview Ln
1371	161-04-05-005.000	201 Springview Ln
1372	153-15-06-006.000	124 Winslow Ln
1373	153-15-08-001.000	129 Summer Ridge Dr
1374	153-15-08-005.000	113 Summer Ridge Dr
1375	153-15-08-004.000	109 Summer Ridge Dr
1376	153-00-00-031.000	Old Trolley Rd
1377	154-00-00-049.000	92 Springview Ln
1378	999-00-00-001.000	
1379	153-15-08-033.000	115 Walden Ridge Way
1380	153-15-08-032.000	113 Walden Ridge Way
1381	153-15-08-031.000	111 Walden Ridge Way
1382	153-15-08-035.000	119 Walden Ridge Way
1383	153-15-08-050.000	110 Walden Ridge Way
1384	161-00-00-028.000	10055 Dorchester Rd
1385	161-08-04-004.000	10009 Dorchester Rd
1386	161-04-02-067.000	395 Springview Ln
1387	161-04-02-020.000	Travelers Blvd
1388	161-04-02-011.000	Springview Ln

1389	161-08-03-003.000	4665 Ladson Rd
1390	161-04-11-004.000	107 Winslow Ln
1391	161-04-10-004.000	106 Winslow Ln
1392	162-05-11-011.000	9970 Dorchester Rd
1393	153-15-06-009.000	118 Winslow Ln
1394	154-00-00-047.000	87 Springview Ln
1395	153-15-08-006.000	117 Summer Ridge Dr
1396	161-04-02-088.000	311 Springview Ln
1397	153-15-08-034.000	117 Walden Ridge Way
1398	161-08-01-009.000	10150 Dorchester Rd
1399	153-16-03-008.000	100 Muir Ct Unit A
1400	161-08-05-007.000	102 Ruston Pl
1401	161-08-05-008.000	104 Ruston Pl
1402	161-08-05-003.000	102 Parish Parc Dr
1403	161-08-05-009.000	106 Ruston Pl
1404	161-08-05-010.000	108 Ruston Pl
1405	161-08-05-001.000	Travelers Blvd
1406	161-08-01-015.000	103 Parish Parc Dr
1407	161-08-01-005.000	810 Travelers Blvd
1408	161-08-05-002.000	100 Parish Parc Dr
1409	161-08-01-014.000	101 Parish Parc Dr
1410	154-13-01-001.000	101 Madison Ave
1411	154-13-01-012.000	100 Monroe Rd
1412	154-13-01-011.000	102 Monroe Rd
1413	154-13-01-010.000	104 Monroe Rd
1414	154-13-01-002.000	103 Madison Ave
1415	162-01-11-007.000	114 Monroe Rd
1416	162-01-11-004.000	119 Madison Ave
1417	162-01-11-005.000	118 Monroe Rd
1418	162-01-11-006.000	116 Monroe Rd
1419	162-01-11-003.000	117 Madison Ave
1420	162-01-11-002.000	115 Madison Ave
1421	154-13-01-003.000	105 Madison Ave
1422	154-13-01-009.000	106 Monroe Rd
1423	154-13-01-004.000	107 Madison Ave
1424	154-13-01-005.000	109 Madison Ave
1425	154-13-01-008.000	108 Monroe Rd
1426	154-13-01-006.000	111 Madison Ave
1427	154-13-01-007.000	110 Monroe Rd
1428	162-01-11-001.000	113 Madison Ave
1429	162-01-11-008.000	112 Monroe Rd
1430	154-13-02-002.000	103 Monroe Rd
1431	154-13-02-001.000	101 Monroe Rd
1432	154-13-02-020.000	100 Jackson Rd
1433	154-13-02-019.000	102 Jackson Rd

1434	154-13-02-018.000	104 Jackson Rd
1435	154-13-02-003.000	105 Monroe Rd
1436	154-13-02-004.000	107 Monroe Rd
1437	154-13-02-017.000	106 Jackson Rd
1438	154-13-02-013.000	114 Jackson Rd
1439	154-13-02-008.000	115 Monroe Rd
1440	154-13-02-009.000	117 Monroe Rd
1441	154-13-02-012.000	116 Jackson Rd
1442	154-13-02-010.000	119 Monroe Rd
1443	154-13-02-011.000	118 Jackson Rd
1444	154-13-02-007.000	113 Monroe Rd
1445	154-13-02-014.000	112 Jackson Rd
1446	154-13-02-006.000	111 Monroe Rd
1447	154-13-02-015.000	110 Jackson Rd
1448	154-13-02-016.000	108 Jackson Rd
1449	154-13-02-005.000	109 Monroe Rd
1450	162-01-10-014.000	108 Madison Ave
1451	162-01-10-012.000	112 Madison Ave
1452	162-01-10-013.000	110 Madison Ave
1453	154-13-03-005.000	109 Jackson Rd
1454	154-13-03-008.000	115 Jackson Rd
1455	154-13-03-001.000	101 Jackson Rd
1456	154-13-03-020.000	100 Van Buren Ave
1457	154-13-03-016.000	108 Van Buren Ave
1458	154-13-03-015.000	110 Van Buren Ave
1459	154-13-03-004.000	107 Jackson Rd
1460	154-13-03-018.000	104 Van Buren Ave
1461	154-13-03-017.000	106 Van Buren Ave
1462	154-13-03-003.000	105 Jackson Rd
1463	154-13-03-002.000	103 Jackson Rd
1464	154-13-03-006.000	111 Jackson Rd
1465	154-13-03-007.000	113 Jackson Rd
1466	154-13-03-009.000	117 Jackson Rd
1467	154-13-03-010.000	119 Jackson Rd
1468	154-13-03-012.000	116 Van Buren Ave
1469	154-13-03-014.000	112 Van Buren Ave
1470	154-13-03-013.000	114 Van Buren Ave
1471	154-13-03-011.000	118 Van Buren Ave
1472	154-13-04-010.000	113 Van Buren Ave
1473	154-13-04-013.000	1014 Harrison Rd
1474	154-13-04-014.000	1012 Harrison Rd
1475	154-13-04-009.000	111 Van Buren Ave
1476	154-13-04-008.000	109 Van Buren Ave
1477	154-13-04-015.000	1010 Harrison Rd
1478	154-13-04-007.000	107 Van Buren Ave

1479	154-13-04-016.000	1008 Harrison Rd
1480	154-13-04-006.000	105 Van Buren Ave
1481	154-13-04-017.000	1006 Harrison Rd
1482	154-14-08-003.000	1005 Harrison Rd
1483	154-14-08-006.000	1011 Harrison Rd
1484	154-14-08-004.000	1007 Harrison Rd
1485	154-13-04-001.000	4215 Ladson Rd
1486	154-13-04-002.000	4217 Ladson Rd
1487	154-13-04-018.000	1004 Harrison Rd
1488	154-14-08-002.000	1003 Harrison Rd
1489	154-14-08-005.000	1009 Harrison Rd
1490	154-14-08-007.000	1013 Harrison Rd
1491	154-14-08-008.000	1015 Harrison Rd
1492	154-14-08-009.000	1017 Harrison Rd
1493	154-14-08-010.000	1019 Harrison Rd
1494	154-13-04-004.000	101 Van Buren Ave
1495	154-13-04-003.000	4219 Ladson Rd
1496	154-13-04-005.000	103 Van Buren Ave
1497	154-14-08-011.000	1021 Harrison Rd
1498	154-14-08-012.000	1023 Harrison Rd
1499	154-14-08-013.000	1025 Harrison Rd
1500	154-13-04-011.000	115 Van Buren Ave
1501	162-01-08-001.000	130 Tranquil Ln
1502	162-01-08-005.000	126 Tranquil Ln
1503	162-01-08-004.000	128 Tranquil Ln
1504	162-05-06-011.000	106 Lamie Dr
1505	162-05-06-012.000	104 Lamie Dr
1506	162-05-06-003.000	105 Dale Ave
1507	162-05-06-004.000	107 Dale Ave
1508	162-05-06-005.000	109 Dale Ave
1509	162-05-06-006.000	111 Dale Ave
1510	162-05-06-010.000	108 Lamie Dr
1511	162-05-06-008.000	117 Tranquil Ln
1512	162-05-06-007.000	113 Dale Ave
1513	162-05-06-009.000	110 Lamie Dr
1514	162-05-04-010.000	115 Dale Ave
1515	162-05-04-009.000	113 Tranquil Ln
1516	162-05-03-013.000	104 Claudia Dr
1517	162-05-03-012.000	106 Claudia Dr
1518	162-05-03-005.000	105 Branton Ave
1519	162-05-03-006.000	107 Branton Ave
1520	162-05-04-008.000	111 Claudia Dr
1521	162-05-03-011.000	108 Claudia Dr
1522	162-05-03-007.000	109 Branton Ave
1523	162-05-03-009.000	113 Branton Ave

1524	162-05-03-010.000	110 Claudia Dr
1525	162-05-03-008.000	111 Branton Ave
1526	162-05-01-015.000	108 Branton Ave
1527	162-05-01-009.000	111 Alma Dr
1528	162-05-01-014.000	110 Branton Ave
1529	162-05-01-013.000	112 Branton Ave
1530	162-05-01-016.000	106 Branton Ave
1531	162-05-01-011.000	115 Alma Dr
1532	162-05-02-001.000	117 Alma Dr
1533	162-05-02-003.000	96 Tranquil Ln
1534	162-05-02-004.000	98 Tranquil Ln
1535	162-05-02-002.000	119 Alma Dr
1536	161-04-07-016.000	Springview Ln
1537	161-04-07-003.000	Springview Ln
1538	161-04-05-002.000	1825 Old Trolley Rd
1539	153-16-12-005.000	113 Barlow Dr
1540	153-16-09-019.000	112 Barlow Dr
1541	153-16-12-003.000	117 Barlow Dr
1542	153-16-12-013.000	206 Dupont Way
1543	153-16-12-010.000	103 Barlow Dr
1544	153-16-09-024.000	102 Barlow Dr
1545	153-00-00-091.000	1515 Old Trolley Rd
1546	153-12-01-030.000	315 Dupont Way
1547	153-12-01-031.000	313 Dupont Way
1548	153-12-01-032.000	311 Dupont Way
1549	153-12-01-028.000	319 Dupont Way
1550	153-00-00-070.000	1575 Old Trolley Rd
1551	153-15-10-043.000	123 Melanie Ln
1552	153-11-11-001.000	Summer Trace Dr
1553	153-16-12-015.000	210 Dupont Way
1554	153-16-11-010.000	219 Dupont Way
1555	153-16-12-014.000	208 Dupont Way
1556	153-12-02-001.000	207 Hardee Ave
1557	153-12-02-002.000	209 Hardee Ave
1558	153-12-01-033.000	309 Dupont Way
1559	153-12-01-038.000	247 Dupont Way
1560	153-12-01-039.000	245 Dupont Way
1561	153-12-01-040.000	243 Dupont Way
1562	153-00-00-078.000	1525 Old Trolley Rd
1563	153-12-02-003.000	211 Hardee Ave
1564	153-12-02-005.000	215 Hardee Ave
1565	153-12-02-004.000	213 Hardee Ave
1566	153-12-02-006.000	217 Hardee Ave
1567	153-12-02-007.000	219 Hardee Ave
1568	153-00-00-060.000	1435 Old Trolley Rd

1569	153-00-00-022.000	Old Trolley Rd
1570	153-12-01-023.000	329 Dupont Way
1571	153-12-01-026.000	323 Dupont Way
1572	153-12-02-011.000	227 Hardee Ave
1573	153-12-01-014.000	228 Hardee Ave
1574	153-12-02-008.000	221 Hardee Ave
1575	153-12-01-020.000	312 Dupont Way
1576	153-12-01-021.000	314 Dupont Way
1577	153-12-01-024.000	327 Dupont Way
1578	153-12-01-027.000	321 Dupont Way
1579	153-12-01-011.000	222 Hardee Ave
1580	153-12-01-010.000	220 Hardee Ave
1581	153-12-01-009.000	218 Hardee Ave
1582	162-01-14-002.000	93 Springview Ln
1583	154-13-09-001.000	77 Springview Ln
1584	154-13-07-001.000	302 Midland Pkwy
1585	154-13-07-003.000	320 Midland Pkwy
1586	154-00-00-042.000	328 Midland Pkwy
1587	154-13-07-002.000	4306 Ladson Rd
1588	154-00-00-039.000	4400 Ladson Rd
1589	162-01-14-007.000	4340 Ladson Rd
1590	162-01-14-008.000	4330 Ladson Rd
1591	162-01-14-006.000	4390 Ladson Rd
1592	162-01-14-009.000	4310 Ladson Rd
1593	162-01-14-005.000	4370 Ladson Rd
1594	153-00-00-094.000	188 Midland Pkwy
1595	153-00-00-117.000	188 Midland Pkwy
1596	153-00-00-068.000	1645 Old Trolley Rd
1597	153-00-00-111.000	Old Trolley Rd
1598	161-08-02-001.000	10090 Dorchester Rd
1599	161-08-02-002.000	10040 Dorchester Rd
1600	161-08-02-005.000	10002 Dorchester Rd
1601	153-15-08-044.000	122 Walden Ridge Way
1602	153-15-08-041.000	128 Walden Ridge Way
1603	153-15-08-038.000	125 Walden Ridge Way
1604	153-15-08-039.000	127 Walden Ridge Way
1605	153-15-08-053.000	104 Walden Ridge Way
1606	153-15-08-045.000	120 Walden Ridge Way
1607	153-15-08-049.000	112 Walden Ridge Way
1608	153-15-08-052.000	106 Walden Ridge Way
1609	153-15-08-054.000	102 Walden Ridge Way
1610	153-15-08-040.000	129 Walden Ridge Way
1611	153-15-08-048.000	114 Walden Ridge Way
1612	153-15-08-037.000	123 Walden Ridge Way
1613	153-15-08-046.000	118 Walden Ridge Way

1614	153-15-08-047.000	116 Walden Ridge Way
1615	153-15-08-055.000	100 Walden Ridge Way
1616	161-08-02-022.000	727 Travelers Blvd
1617	161-00-00-109.000	2040 Old Trolley Rd
1618	161-00-00-087.000	4820 Ladson Rd
1619	161-00-00-067.000	9989 Dorchester Rd
1620	161-00-00-104.000	Ladson Rd
1621	161-04-06-004.000	1703 Old Trolley Rd
1622	161-08-04-005.000	4720 Ladson Rd
1623	161-08-04-001.000	10015 Dorchester Rd
1624	154-00-00-048.000	108 Bentons Lodge Rd
1625	161-00-00-108.000	Old Trolley Rd
1626	161-00-00-127.000	Crosscreek Dr
1627	161-00-00-110.000	2041 Old Trolley Rd
1628	162-05-11-039.000	144 Alma Dr
1629	162-05-11-038.000	142 Alma Dr
1630	162-05-11-037.000	140 Alma Dr
1631	162-05-11-036.000	136 Alma Dr
1632	162-05-11-035.000	134 Alma Dr
1633	162-05-11-034.000	132 Alma Dr
1634	162-05-11-033.000	130 Alma Dr
1635	162-05-11-032.000	126 Alma Dr
1636	162-05-11-031.000	124 Alma Dr
1637	162-05-11-030.000	122 Alma Dr
1638	162-05-11-029.000	120 Alma Dr
1639	162-05-11-028.000	116 Alma Dr
1640	162-05-11-027.000	114 Alma Dr
1641	162-05-11-026.000	112 Alma Dr
1642	162-05-11-025.000	110 Alma Dr
1643	162-05-11-041.888	Alma Dr
1644	162-01-12-027.000	
1645	162-05-10-005.000	
1646	162-05-10-006.000	
1647	162-02-01-009.000	
1648	162-02-01-010.000	
1649	162-02-01-027.000	
1650	162-02-01-028.000	
1651	162-02-01-113.000	
1652	162-02-01-117.000	
1653	162-02-01-148.000	
1654	162-02-01-173.000	
1655	162-02-01-176.000	
1656	162-01-12-014.000	
1657	162-01-12-018.000	
1658	162-01-12-015.000	

1659	162-01-12-016.000
1660	162-01-12-017.000
1661	162-05-08-001.000
1662	162-01-13-003.000
1663	162-05-08-002.000
1664	162-05-08-003.000
1665	162-05-08-005.000
1666	162-05-08-026.000
1667	162-05-08-028.000
1668	162-05-08-027.000
1669	162-05-08-025.000
1670	162-05-08-024.000
1671	162-05-08-023.000
1672	162-05-08-029.000
1673	162-05-08-021.000
1674	162-05-08-014.000
1675	162-05-08-015.000
1676	162-05-08-006.000
1677	162-05-08-008.000
1678	162-05-08-009.000
1679	162-02-01-011.000
1680	162-05-08-007.000
1681	162-02-02-010.000
1682	162-05-08-018.000
1683	162-02-02-011.000
1684	162-02-01-029.000
1685	162-02-01-105.000
1686	162-02-01-110.000
1687	162-02-01-168.000
1688	162-02-01-174.000
1689	162-02-01-019.000
1690	162-01-12-026.000
1691	162-05-10-004.000
1692	162-01-12-029.000
1693	162-01-12-030.000
1694	162-05-08-004.000
1695	162-05-08-013.000
1696	162-05-08-019.000
1697	162-05-08-022.000
1698	162-02-02-001.000
1699	162-05-10-001.000
1700	162-05-10-003.000
1701	162-01-12-028.000
1702	162-05-10-007.000
1703	162-05-10-008.000

1704	162-05-10-009.000
1705	162-05-08-033.000
1706	162-02-02-002.000
1707	162-02-01-008.000
1708	162-02-01-108.000
1709	162-02-01-112.000
1710	162-02-01-171.000
1711	162-02-01-175.000
1712	162-05-10-002.000
1713	162-02-01-106.000
1714	162-02-01-109.000
1715	162-02-01-149.000
1716	162-02-01-172.000
1717	162-05-08-012.000
1718	162-05-08-020.000
1719	162-02-01-025.000
1720	162-02-01-026.000
1721	162-02-01-111.000
1722	162-02-01-012.000
1723	162-02-01-103.000
1724	162-00-00-009.000
1725	162-02-01-099.000
1726	162-02-01-102.000
1727	162-02-01-226.000
1728	162-02-01-225.000
1729	162-02-01-224.000
1730	162-02-01-223.000
1731	162-02-01-222.000
1732	162-02-01-221.000
1733	162-02-01-220.000
1734	162-02-01-216.000
1735	162-02-01-116.000
1736	162-02-01-214.000
1737	162-02-01-215.000
1738	162-02-01-213.000
1739	162-02-01-208.000
1740	162-02-01-209.000
1741	162-02-01-210.000
1742	162-02-01-212.000
1743	162-02-01-211.000
1744	162-05-08-011.000
1745	162-05-08-010.000
1746	162-05-08-016.000
1747	162-05-08-017.000
1748	162-00-00-010.000

1749	162-02-02-009.000
1750	162-02-02-003.000
1751	162-02-02-008.000
1752	162-02-01-101.000
1753	162-02-02-006.000
1754	162-02-02-004.000
1755	162-02-01-100.000
1756	162-02-01-229.000
1757	162-02-01-007.000
1758	162-02-02-005.000
1759	162-05-07-037.000
1760	162-05-07-036.000
1761	162-05-07-035.000
1762	162-05-07-042.000
1763	162-05-07-040.000
1764	162-05-07-039.000
1765	162-05-07-003.000
1766	162-05-07-034.000
1767	162-05-07-004.000
1768	162-05-07-038.000
1769	162-05-07-005.000
1770	162-05-07-006.000
1771	162-05-07-007.000
1772	162-05-07-008.000
1773	162-05-07-033.000
1774	162-05-07-009.000
1775	162-05-07-010.000
1776	162-05-07-032.000
1777	162-05-07-011.000
1778	162-05-07-012.000
1779	162-05-07-013.000
1780	162-05-07-014.000
1781	162-05-07-015.000
1782	162-05-07-016.000
1783	162-05-07-017.000
1784	162-05-07-031.000
1785	162-05-07-020.000
1786	162-05-07-022.000
1787	162-05-07-023.000
1788	162-05-07-024.000
1789	162-05-07-025.000
1790	162-05-05-025.000
1791	162-01-12-006.000
1792	162-05-07-026.000
1793	162-05-07-027.000

1794	162-05-07-028.000
1795	162-05-07-029.000
1796	162-05-07-030.000
1797	162-01-13-001.000
1798	162-05-08-032.000
1799	162-01-13-002.000
1800	162-05-08-031.000
1801	162-05-08-030.000
1802	162-05-07-001.000
1803	162-05-05-015.000
1804	162-05-05-013.000
1805	162-05-05-017.000
1806	162-05-07-021.000
1807	162-05-05-024.000
1808	162-05-05-016.000
1809	162-05-05-014.000
1810	162-05-05-018.000
1811	162-05-07-019.000
1812	162-05-07-018.000
1813	162-05-05-023.000
1814	162-05-05-012.000
1815	162-05-07-002.000
1816	162-05-07-041.000
1817	162-05-05-005.000
1818	162-05-05-006.000
1819	162-05-05-007.000
1820	162-05-05-010.000
1821	162-01-12-021.000
1822	162-01-12-022.000
1823	162-01-12-023.000
1824	162-01-12-024.000
1825	162-01-12-025.000
1826	162-02-01-018.000
1827	162-02-01-016.000
1828	162-02-01-234.000
1829	162-05-05-019.000
1830	162-05-05-020.000
1831	162-05-05-021.000
1832	162-05-09-001.000
1833	162-05-09-002.000
1834	162-05-09-003.000
1835	162-05-09-004.000
1836	162-01-12-001.000
1837	162-01-12-002.000
1838	162-01-12-003.000

1839	162-01-12-004.000
1840	162-01-12-007.000
1841	162-01-12-005.000
1842	162-01-06-016.000
1843	162-01-12-008.000
1844	162-02-01-017.000
1845	162-01-12-019.000
1846	162-01-12-020.000
1847	162-01-12-011.000
1848	162-01-12-013.000
1849	162-01-12-012.000
1850	162-01-12-009.000
1851	162-01-12-010.000
1852	162-05-05-011.000
1853	162-01-12-032.000
1854	162-02-01-146.000
1855	162-02-01-164.000
1856	162-02-01-098.000
1857	162-02-01-219.000
1858	162-02-01-217.000
1859	162-02-01-159.000
1860	162-02-01-030.000
1861	162-02-01-032.000
1862	162-02-01-160.000
1863	162-05-05-008.000
1864	162-02-01-233.000
1865	162-02-01-235.000
1866	162-02-01-150.000
1867	162-02-01-167.000
1868	162-02-01-169.000
1869	162-02-01-170.000
1870	162-02-01-097.000
1871	162-02-01-227.000
1872	162-02-01-218.000
1873	162-02-01-163.000
1874	162-02-01-031.000
1875	162-02-01-033.000
1876	162-02-01-114.000
1877	162-02-01-158.000
1878	162-02-01-024.000
1879	162-05-05-009.000
1880	162-02-01-231.000
1881	162-02-01-232.000
1882	162-02-01-147.000
1883	162-02-01-157.000

1884	162-02-01-162.000
1885	162-02-01-177.000
1886	162-02-01-034.000
1887	162-02-01-035.000
1888	162-02-01-207.000
1889	162-01-12-031.000
1890	162-02-01-014.000
1891	162-05-05-022.000
1892	162-05-05-001.000
1893	162-05-05-004.000
1894	162-05-05-002.000
1895	162-09-04-002.000
1896	162-05-05-003.000
1897	162-02-01-006.000
1898	162-02-01-238.000
1899	162-02-01-036.000
1900	162-02-01-022.000
1901	162-02-01-115.000
1902	162-02-01-104.000
1903	162-02-01-107.000
1904	162-02-01-096.000
1905	162-02-01-080.000
1906	162-02-01-087.000
1907	162-02-01-088.000
1908	162-02-01-083.000
1909	162-02-01-082.000
1910	162-02-01-084.000
1911	162-02-01-081.000
1912	162-02-01-089.000
1913	162-02-01-090.000
1914	162-02-01-091.000
1915	162-02-01-092.000
1916	162-02-01-093.000
1917	162-02-01-094.000
1918	162-02-01-095.000
1919	162-02-01-070.000
1920	162-02-01-074.000
1921	162-02-01-075.000
1922	162-02-01-076.000
1923	162-02-01-077.000
1924	162-02-01-071.000
1925	162-02-01-072.000
1926	162-02-01-073.000
1927	162-02-01-078.000
1928	162-02-01-079.000

1929	162-02-01-051.000
1930	162-02-01-038.000
1931	162-02-01-041.000
1932	162-02-01-037.000
1933	162-02-01-040.000
1934	162-02-01-039.000
1935	162-02-01-042.000
1936	162-02-01-043.000
1937	162-02-01-048.000
1938	162-02-01-049.000
1939	162-02-01-050.000
1940	162-02-01-054.000
1941	162-02-01-055.000
1942	162-02-01-056.000
1943	162-02-01-047.000
1944	162-02-01-044.000
1945	162-02-01-052.000
1946	162-02-01-053.000
1947	162-02-01-057.000
1948	162-02-01-058.000
1949	162-02-01-059.000
1950	162-02-01-060.000
1951	162-02-01-061.000
1952	162-02-01-062.000
1953	162-02-01-063.000
1954	162-02-01-064.000
1955	162-02-01-065.000
1956	162-02-01-066.000
1957	162-02-01-067.000
1958	162-02-01-068.000
1959	162-02-01-069.000
1960	162-02-01-119.000
1961	162-02-01-122.000
1962	162-02-01-123.000
1963	162-02-01-126.000
1964	162-02-01-130.000
1965	162-02-01-133.000
1966	162-02-01-134.000
1967	162-02-01-138.000
1968	162-02-01-139.000
1969	162-02-01-144.000
1970	162-02-01-178.000
1971	162-02-01-180.000
1972	162-02-01-131.000
1973	162-02-01-140.000

1974	162-02-01-145.000
1975	162-02-01-129.000
1976	162-02-01-132.000
1977	162-02-01-179.000
1978	162-02-01-181.000
1979	162-02-01-141.000
1980	162-02-01-127.000
1981	162-02-01-128.000
1982	162-02-01-153.000
1983	162-02-01-165.000
1984	162-02-01-155.000
1985	162-02-01-142.000
1986	162-02-01-161.000
1987	162-02-01-121.000
1988	162-02-01-125.000
1989	162-02-01-135.000
1990	162-02-01-124.000
1991	162-02-01-152.000
1992	162-02-01-182.000
1993	162-02-01-184.000
1994	162-02-01-183.000
1995	162-02-01-120.000
1996	162-02-01-151.000
1997	162-02-01-166.000
1998	162-02-01-156.000
1999	162-02-01-143.000
2000	162-02-01-136.000
2001	162-02-01-137.000
2002	162-02-01-189.000
2003	162-02-01-188.000
2004	162-02-01-187.000
2005	162-02-01-186.000
2006	162-02-01-190.000
2007	162-02-01-191.000
2008	162-02-01-196.000
2009	162-02-01-195.000
2010	162-02-01-197.000
2011	162-02-01-205.000
2012	162-02-01-203.000
2013	162-02-01-202.000
2014	162-02-01-201.000
2015	162-02-01-228.000
2016	162-02-01-206.000
2017	162-02-01-192.000
2018	162-02-01-194.000

2019	162-02-01-199.000
2020	162-02-01-200.000
2021	162-02-01-185.000
2022	162-02-01-193.000
2023	162-02-01-198.000
2024	162-02-01-204.000
2025	999-00-00-001.000
2026	162-02-01-154.000
2027	162-02-01-023.000
2028	162-02-01-085.000
2029	162-02-01-086.000
2030	162-02-01-046.000
2031	162-02-01-045.000
2032	162-02-01-004.000
2033	162-02-01-005.000