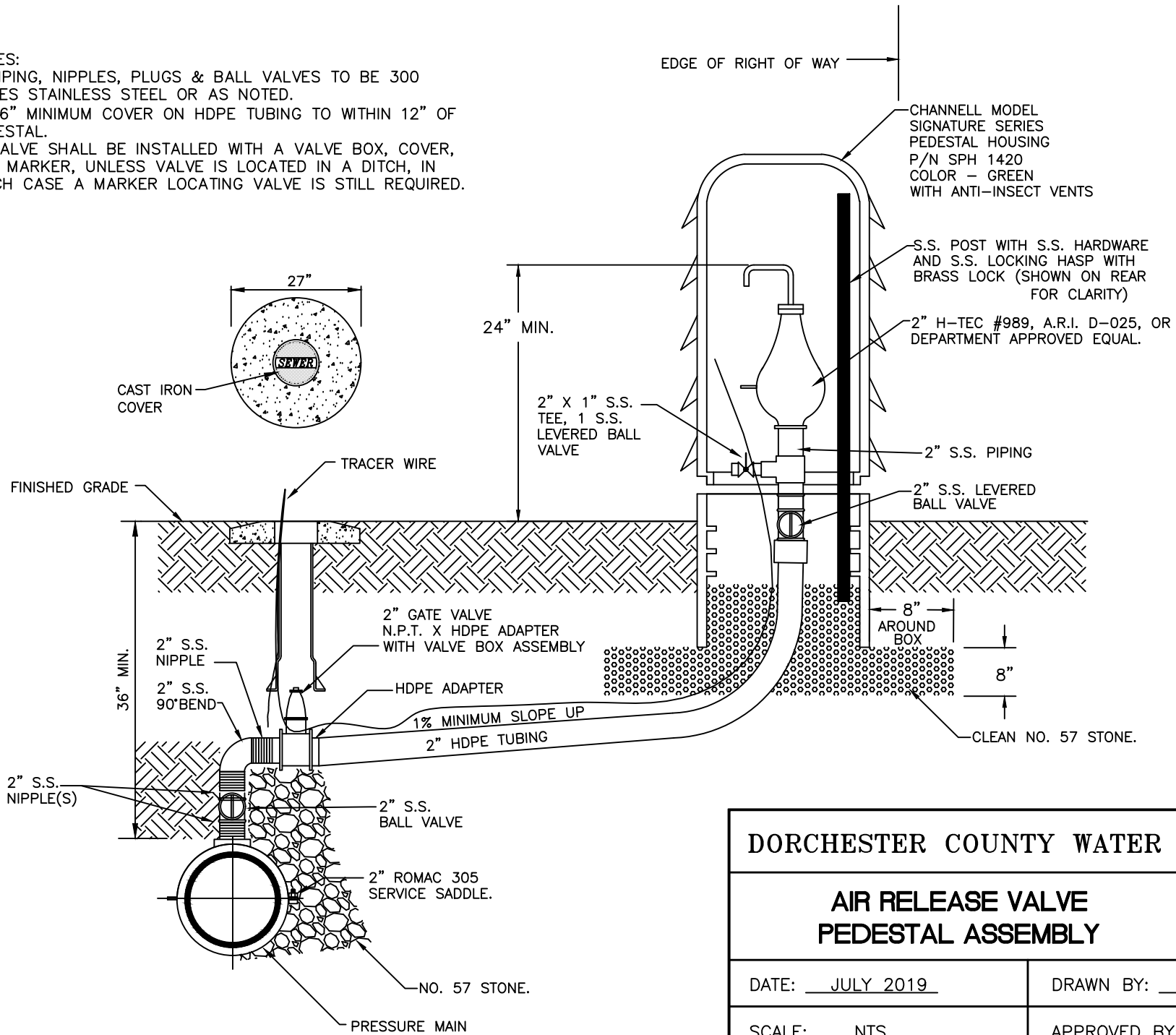


NOTES:

1. PIPING, NIPPLES, PLUGS & BALL VALVES TO BE 300 SERIES STAINLESS STEEL OR AS NOTED.
2. 36" MINIMUM COVER ON HDPE TUBING TO WITHIN 12" OF PEDESTAL.
3. VALVE SHALL BE INSTALLED WITH A VALVE BOX, COVER, AND MARKER, UNLESS VALVE IS LOCATED IN A DITCH, IN WHICH CASE A MARKER LOCATING VALVE IS STILL REQUIRED.



DORCHESTER COUNTY WATER & SEWER	
AIR RELEASE VALVE PEDESTAL ASSEMBLY	DRAWING: S-20
DATE: <u> JULY 2019 </u>	DRAWN BY: <u> STL </u>
SCALE: <u> NTS </u>	APPROVED BY: <u> JDC </u>